



Price
£450,000

Freehold

3x  1x  2x 

**Prince Albert Square,
Redhill, Surrey, RH1**

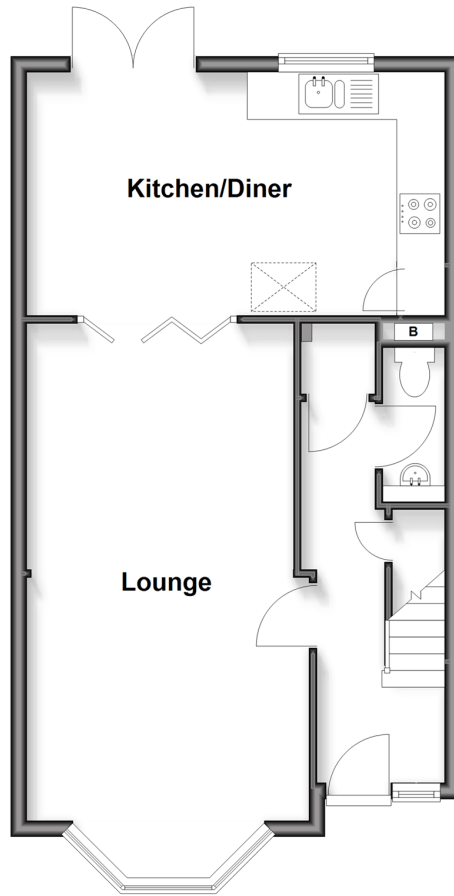
OVER 60?

Secure this property
for up to **59% less!**

cubitt & west
Helping you move forwards

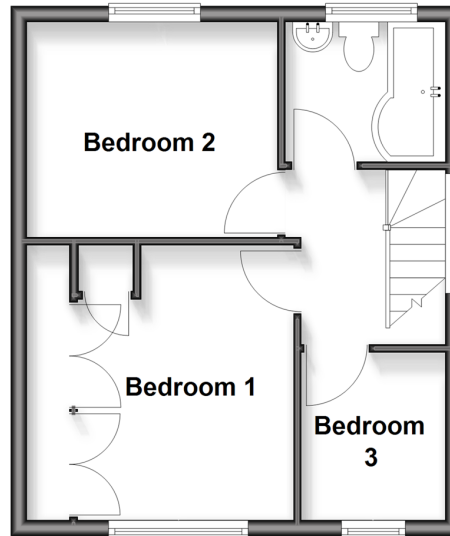
Ground Floor

Approx. 49.1 sq. metres (528.4 sq. feet)



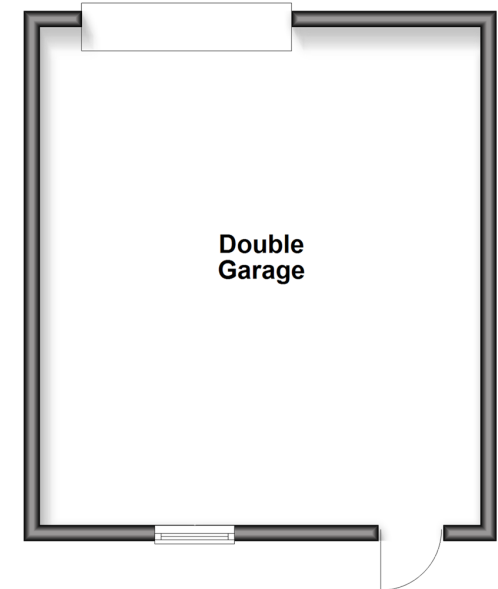
First Floor

Approx. 33.8 sq. metres (363.9 sq. feet)



Outbuilding

Approx. 33.7 sq. metres (362.5 sq. feet)



Accommodation

GROUND FLOOR

Entrance Hall

Living Room: 21'0 into bay x 11'0 (6.41m x 3.36m)

Kitchen/Diner: 17'1 x 10'0 (5.21m x 3.05m)

Cloakroom

FIRST FLOOR

Landing

Bedroom 1: 11'0 x 11'0 (3.36m x 3.36m)

Bedroom 2: 10'0 x 8'10 (3.05m x 2.69m)

Bedroom 3: 6'11 x 5'11 (2.11m x 1.80m)

Bathroom: 6'0 x 5'0 (1.83m x 1.53m)

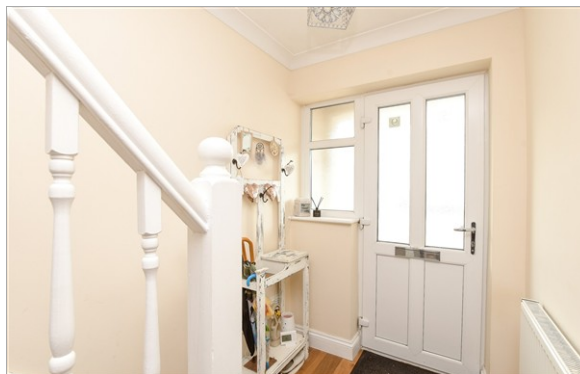
OUT BUILDING

Double Garage

OUTSIDE

Driveway

Rear Garden



Main features

- Double garage with direct access from the rear garden
- Driveway for two cars
- Spacious lounge featuring attractive bay windows
- Large rear garden offering excellent outdoor space and potential
- Three well-proportioned bedrooms, main bedroom with fitted wardrobes



Nearest Schools

Primary Schools: Salfords Primary 0.3 miles, Earlswood Junior School 1.1 miles, St John's Primary 1.2 miles
Secondary Schools: Reigate School 1.3 miles, Dunottar School 1.4 miles, Reigate Grammar School 1.9 miles



Transport Information

Train Stations: Salfords 0.7 miles, Earlswood 1.0 miles, Nutfield 1.7 miles



Address

Prince Albert Square, Redhill, Surrey, RH1



Directions

For directions to this property please contact us.



cubitt&west
Helping you move forwards

Call Redhill Branch 01737 778866 ■ cubittandwest.co.uk



■ Through a Homewise Home For Life Plan people aged 60+ can secure this property for up to 59% less, by purchasing a Lifetime Lease



901071AD/20260416/AB/JB2