



Price
£300,000

Freehold

3x  1x  2x 

**High Street, Freshwater,
Isle of Wight, PO40**

OVER 60?

Secure this property
for up to **59% less!**

Pittis 
Helping you move forwards



Main features

- Charming period cottage with gas burner fireplace & period features
- Off road parking for multiple cars at the rear of the garden
- A larger garden ideal for veg plots
- Upgraded shower room with plenty of light
- Within walking distance to Freshwater village & amenities

Accommodation

GROUND FLOOR

Entrance Porch

Lounge: 11'11 x 11'11 (3.38m x 3.38m)

Kitchen: 10'7 x 9'0 (3.23m x 2.75m)

Dining Room: 11'9 x 9'0 (3.58m x 2.75m)

Cloakroom

Utility Area

FIRST FLOOR

Landing

Bedroom 1: 11'11 x 11'11 (3.63m x 3.63m)

Bedroom 2: 11'9 x 7'10 (3.58m x 2.39m)

Bedroom 3: 10'9 x 9'1 (3.28m x 2.77m)

Bathroom

Separate Toilet

OUTSIDE

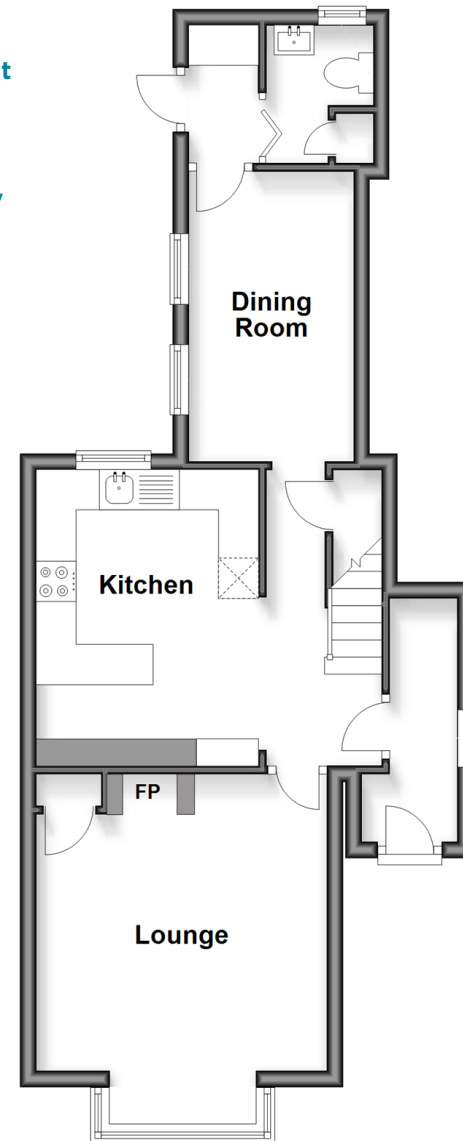
Off Road Parking

Front Garden

Rear Garden

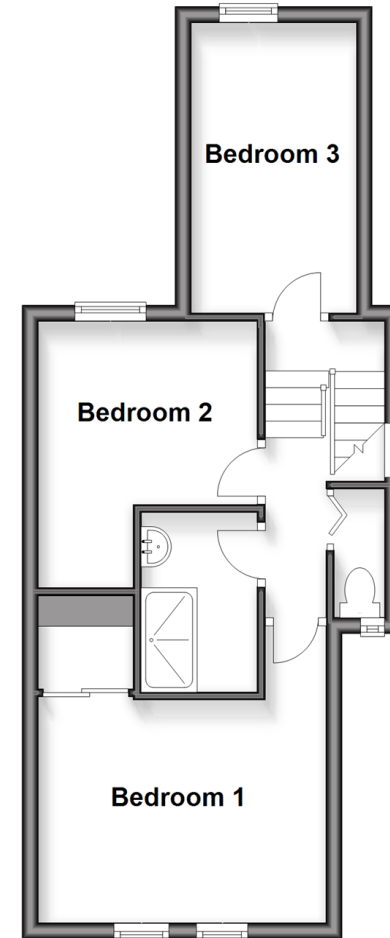
Ground Floor

Approx. 45.2 sq. metres (486.9 sq. feet)



First Floor

Approx. 37.2 sq. metres (400.4 sq. feet)



Call Freshwater - 01983 756222 ■ pittis.co.uk

■ Through a Homewise Home For Life Plan people aged 60+ can secure this property for up to 59% less, by purchasing a Lifetime Lease



60218702/20260309/CG/CG