



OVER 60?

Secure this property
for up to **59% less!**

Price
£185,000

Freehold

1x  1x  1x 

**Hurst View, Eden Road,
Totland Bay, Isle of
Wight, PO39**

Pittis 
Helping you move forwards



Main features

- Immaculate first floor flat
- Stunning sea views over Totland Bay
- Upgraded 4 piece bathroom with roll top bath
- Communal grounds and personal garage
- Walking distance to the beach and village

Accommodation

FIRST FLOOR

Entrance Hall

Bedroom 1: 11'3 x 8'9 (3.43m x 2.67m)

Bathroom: 9'9 x 8'3 (2.97m x 2.52m)

Lounge/Dining Room: 15'0 x 13'4 (4.58m x 4.07m)

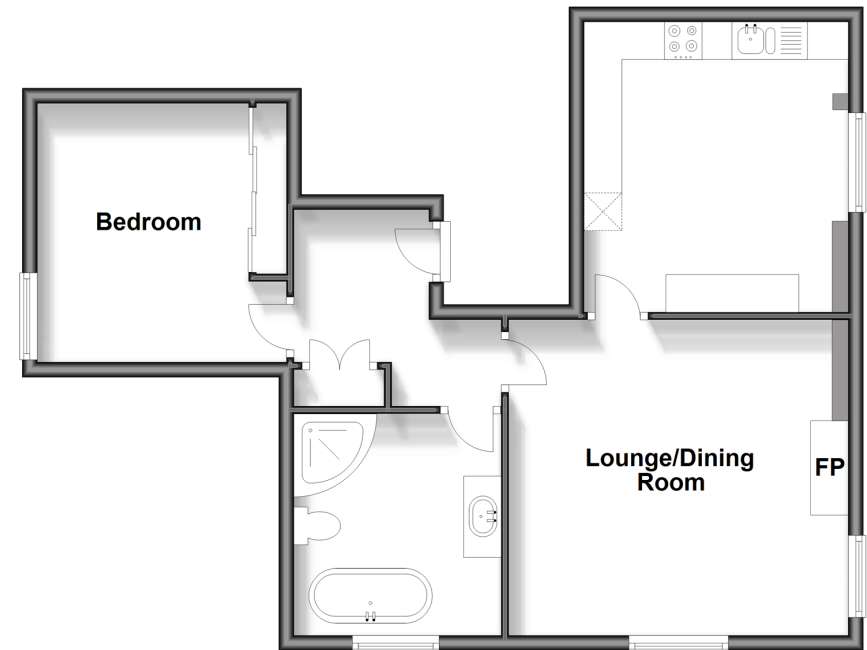
Kitchen: 12'7 x 11'4 (3.84m x 3.46m)

OUTSIDE

Garage

Communal Gardens

First Floor
Approx. 58.8 sq. metres (632.4 sq. feet)



Call Freshwater - 01983 756222 ■ pittis.co.uk

- Legal advice should be taken to verify fixtures/fittings, planning, alterations and/or lease details
- Appliances & services are untested, dimensions are approximate and floor plans are not to scale
- Through a Homewise Home For Life Plan people aged 60+ can secure this property for up to 59% less, by purchasing a Lifetime Lease.



60218358/20250118/SC1/CG