



Price
£560,000

Freehold

4x  2x  2x 

**Ryerson Drive,
Wickford, Essex, SS11**

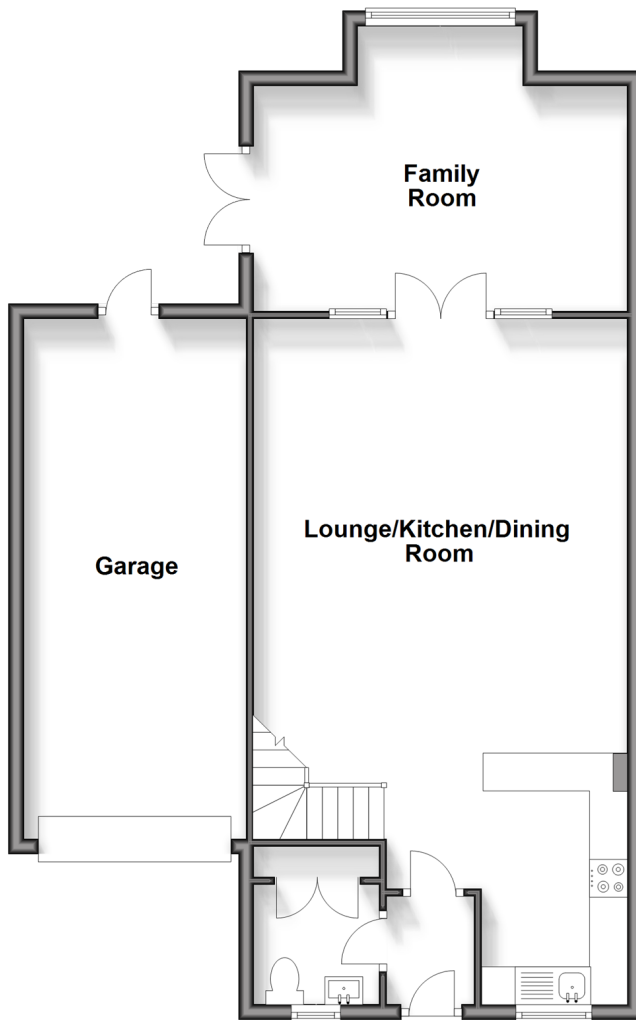
OVER 60?

Secure this property
for up to **59% less!**

 **DOUGLAS
ALLEN**
Helping you move forwards

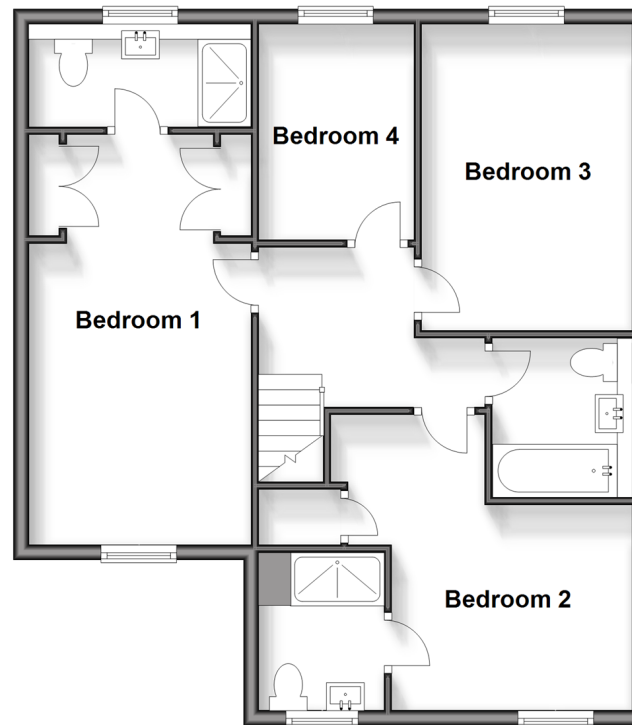
Ground Floor

Approx. 82.4 sq. metres (887.3 sq. feet)



First Floor

Approx. 65.5 sq. metres (705.4 sq. feet)



Accommodation

GROUND FLOOR

Entrance Hallway

Cloakroom

Lounge/Dining Room : 20'2 x 16'3 (6.15m x 4.96m)

Kitchen: 11'9 x 6'6 (3.58m x 1.98m)

Family Room: 15'0 x 9'5 (4.58m x 2.87m)

FIRST FLOOR

Landing

Bedroom 1: 17'8 x 9'7 (5.39m x 2.92m)

En Suite Shower Room

Bedroom 2: 10'4 x 10'3 (3.15m x 3.13m)

En-Suite Shower Room

Bedroom 3: 13'0 x 9'3 (3.97m x 2.82m)

Bedroom 4: 9'7 x 6'8 (2.92m x 2.03m)

Bathroom

OUTSIDE

Garage

Rear Garden

Off Street Parking



Main features

- Extended detached family home
- Garage and driveway
- Two en-suite rooms with a ground floor cloakroom
- Open plan living accommodation
- Located within the popular St Lukes development



Nearest Schools

Primary Schools: Runwell Community Primary 0.8 miles, Rettendon Primary 1.1 miles, Hilltop Junior School 1.2 miles

Secondary Schools: Beauchamps High School 1.4 miles,



Transport Information

Train Stations: Wickford 1.4 miles, Battlesbridge 1.5 miles, Woodham Ferrers 3.3 miles



Address

Ryerson Drive, Wickford, Essex, SS11



Directions

For directions to this property please contact us.

