



Guide Price

£300,000

Leasehold

2x  1x  1x 

**Elm Court, Love Lane,
Woodford Green, Essex
IG8**



Main features

- Spacious first floor flat
- Garage en-bloc
- Close to local shops and amenities
- Chain free
- Lovely views over the green and duck pond
- An early viewing is advised

Accommodation

FIRST FLOOR

Hallway

Bedroom 1: 14'3 x 10'4 (4.35m x 3.15m)

Bedroom 2: 11'2 x 10'4 (3.41m x 3.15m)

Kitchen/Breakfast Room: 11'9 x 9'6
(3.58m x 2.90m)

Lounge/Diner: 17'3 x 11'8 (5.26m x 3.56m)

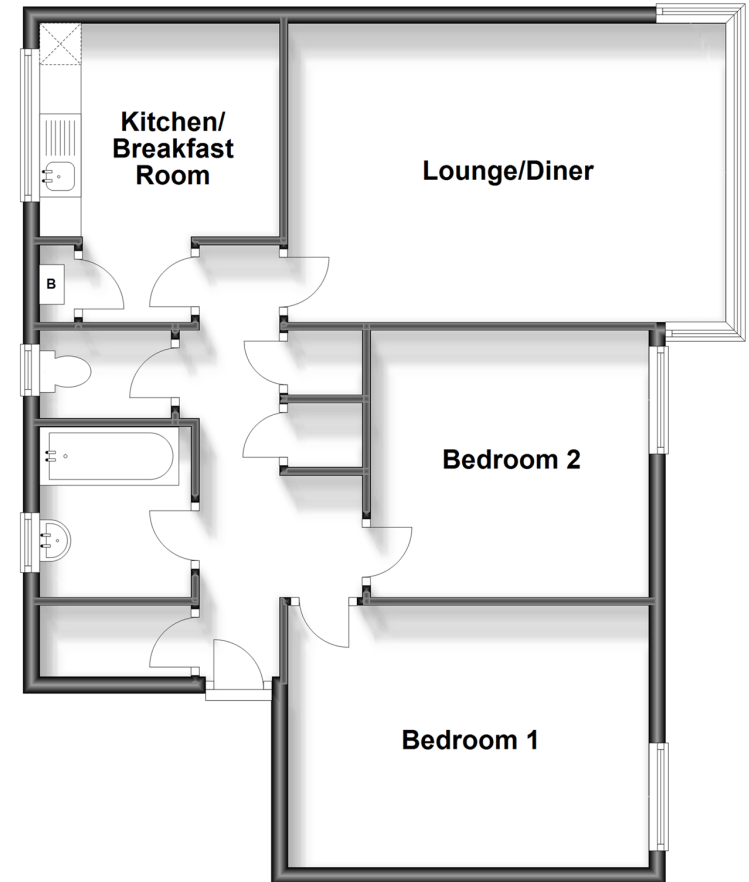
Family Bathroom

Separate Toilet

OUTSIDE

Garage en Bloc

First Floor
Approx. 71.2 sq. metres (766.1 sq. feet)



Call Chigwell - 020 8501 2131 ■ douglasallen.co.uk

- A private rental licensing scheme applies to some properties in this area, please contact us before proceeding
- Legal advice should be taken to verify fixtures/fitings, planning, alterations and/or lease details
- Appliances & services are untested, dimensions are approximate and floor plans are not to scale



50907306/20251015/SP/GF