



OVER 60?

Secure this property
for up to **59% less!**

Price

£600,000

Freehold

4x  2x  1x 

**Eccleston Crescent,
Romford, Essex, RM6**



**DOUGLAS
ALLEN**

Helping you move forwards



Main features

- Beautifully presented semi-detached house close to Goodmayes station
- Large kitchen/dining room with separate utility room
- Ground floor cloakroom
- Spacious rear garden
- Off street parking & garage to rear

Accommodation

GROUND FLOOR

Entrance Hall
Lounge: 27'0 x 9'7 (8.24m x 2.92m)
Kitchen/Dining Room: 15'5 x 8'8 (4.70m x 2.64m)
Utility Room: 9'8 x 6'4 (2.95m x 1.93m)
Cloakroom

FIRST FLOOR

Landing
Bedroom 2: 14'6 x 9'6 (4.42m x 2.90m)
Bedroom 3: 13'7 x 8'9 (4.14m x 2.67m)
Bedroom 4: 8'5 x 6'6 (2.57m x 1.98m)
Bathroom

SECOND FLOOR

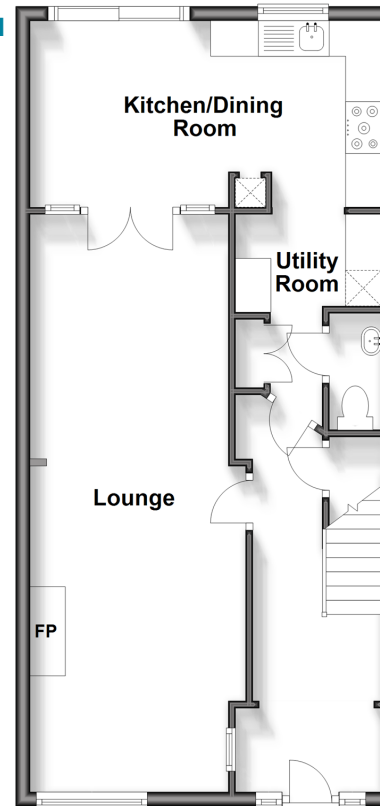
Bedroom 1: 18'2 x 9'9 (5.54m x 2.97m)
En-Suite Shower Room

OUTSIDE

Rear Garden
Off Street Parking
Garage

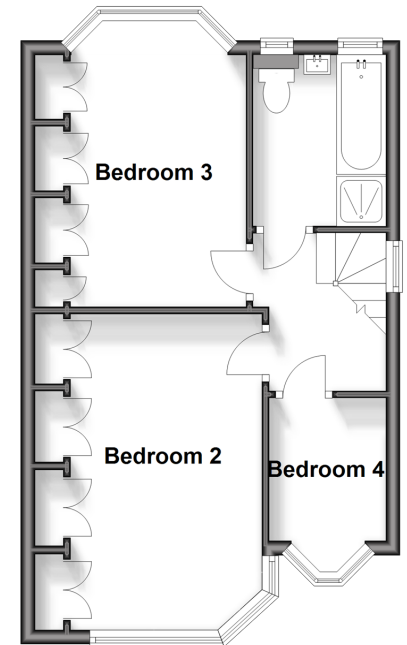
Ground Floor

Approx. 51.0 sq. metres (548.7 sq. feet)



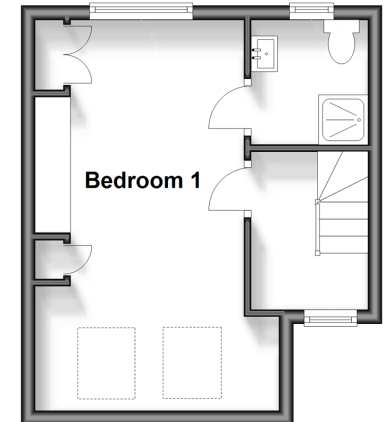
First Floor

Approx. 34.3 sq. metres (369.6 sq. feet)



Second Floor

Approx. 24.0 sq. metres (258.7 sq. feet)



Call Chadwell Heath - 020 8597 0043 ■ douglasallen.co.uk

- A private rental licensing scheme applies to some properties in this area, please contact us before proceeding
- Legal advice should be taken to verify fixtures/fittings, planning, alterations and/or lease details
- Appliances & services are untested, dimensions are approximate and floor plans are not to scale
- Through a Homewise Home For Life Plan people aged 60+ can secure this property for up to 59% less, by purchasing a Lifetime Lease.



50713809/20240608/CN/NK