



Price

£300,000

Leasehold

1x  1x  1x 

**Central House, Eagle
Way, Great Warley
Brentwood, Essex, CM13**

OVER 60?

Secure this property
for up to **59% less!**

 **DOUGLAS
ALLEN**
Helping you move forwards



Main features

- **First floor**
- **Modern and well maintained throughout**
- **Large utility room**
- **In building amenities that include a gym, cafe and work from home space**
- **well located for Brentwood train station with the Elizabeth line**

Accommodation

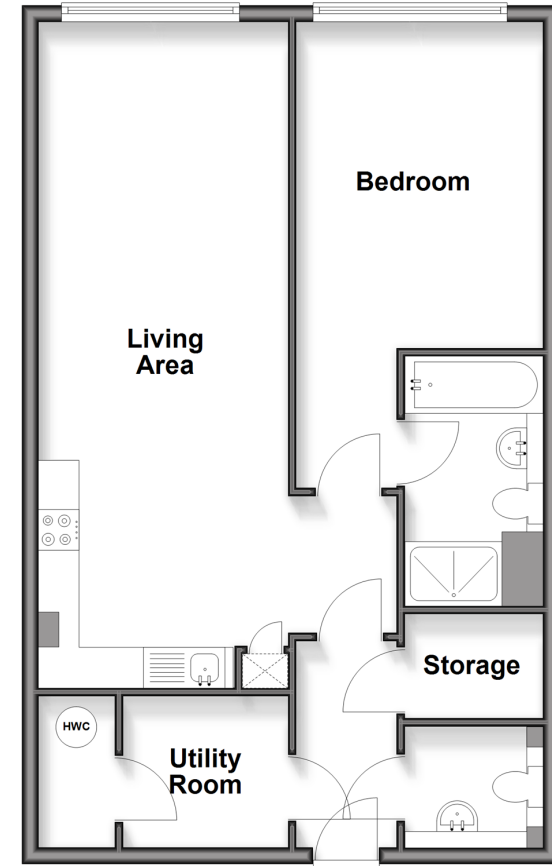
FIRST FLOOR

Entrance Hall
 Lounge/ Kitchen/ Diner
 Utility Room: 6'3 x 6'2 (1.91m x 1.88m)
 Bedroom : 13'3 x 8'9 (4.04m x 2.67m)
 En-suite : 10'1 x 5'6 (3.08m x 1.68m)
 Bathroom

OUTSIDE

Communal Gardens

First Floor
 Approx. 62.7 sq. metres (674.8 sq. feet)



Call Brentwood - 01277 218525 ■ douglasallen.co.uk

- Legal advice should be taken to verify fixtures/fittings, planning, alterations and/or lease details
- Appliances & services are untested, dimensions are approximate and floor plans are not to scale
- Through a Homewise Home For Life Plan people aged 60+ can secure this property for up to 59% less, by purchasing a Lifetime Lease.



50603117/20250723/KM/BH