



Guide Price
£380,000

Freehold

3x  2x  1x 

**Butneys, Basildon,
Essex, SS14**

OVER 60?

Secure this property
for up to **59% less!**

 **DOUGLAS
ALLEN**
Helping you move forwards



Main features

- 3 bedroom beautifully presented terraced house
- Double garage with allocated parking
- Newly refurbished throughout
- Extended to the rear
- Walking distance to Basildon station and town centre

Accommodation

GROUND FLOOR

Entrance Hallway
 Lounge: 21'7 x 12'9 (6.58m x 3.89m)
 Dining Area: 10'8 x 9'6 (3.25m x 2.90m)
 Kitchen: 9'4 x 8'9 (2.85m x 2.67m)
 Utility Area
 Shower Room

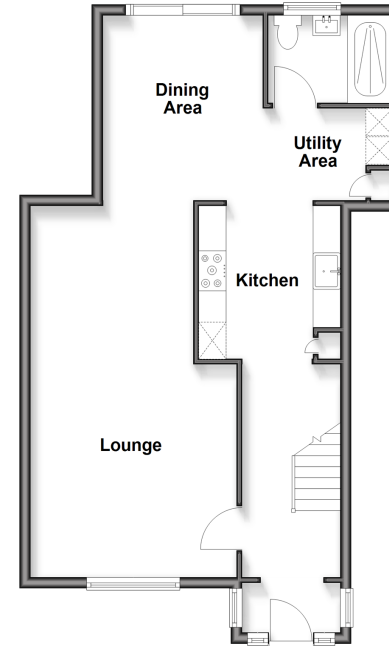
FIRST FLOOR

Landing
 Bedroom 1: 12'2 x 11'3 (3.71m x 3.43m)
 Bedroom 2: 19'4 x 11'3 (5.90m x 3.43m)
 Bedroom 3: 9'2 x 7'8 (2.80m x 2.34m)
 Shower Room

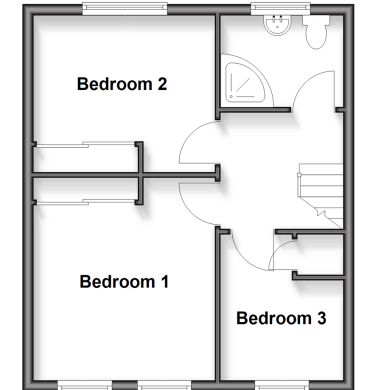
OUTSIDE

Double Garage
 Rear Garden
 2 x Allocated Parking Spaces
 Outbuilding

Ground Floor
 Approx. 58.8 sq. metres (632.5 sq. feet)



First Floor
 Approx. 37.9 sq. metres (407.9 sq. feet)



Call Basildon - 01268 293993 ■ douglasallen.co.uk

■ Through a Homewise Home For Life Plan people aged 60+ can secure this property for up to 59% less, by purchasing a Lifetime Lease



505007FQ/20260502/MB/GW