



Guide Price
£1,400,000

Freehold

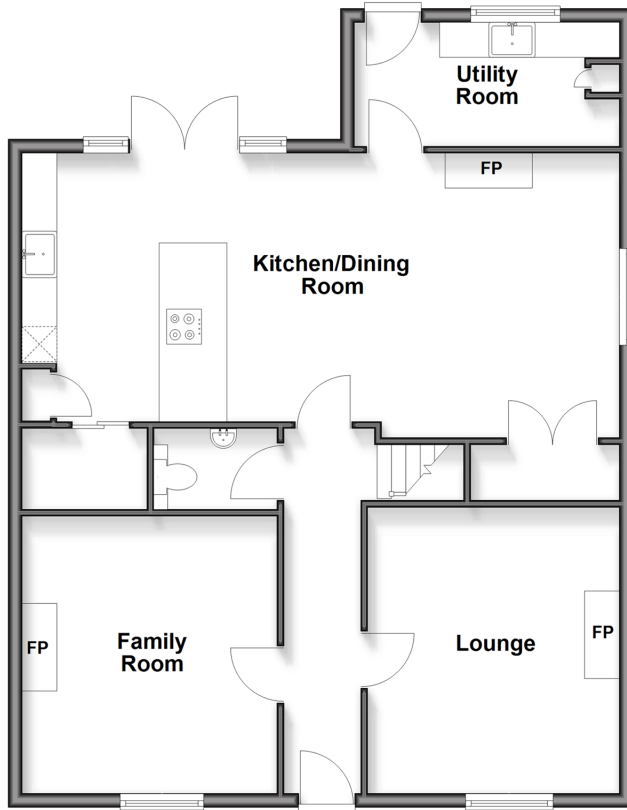
4x  3x  3x 

**Queen Street,
Emsworth, Hampshire,
PO10**

cubitt & west
Helping you move forwards

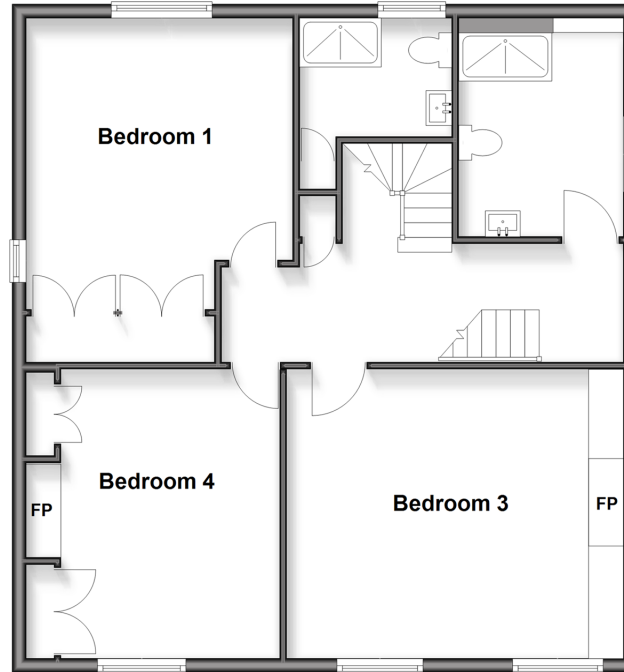
Ground Floor

Approx. 85.5 sq. metres (920.0 sq. feet)



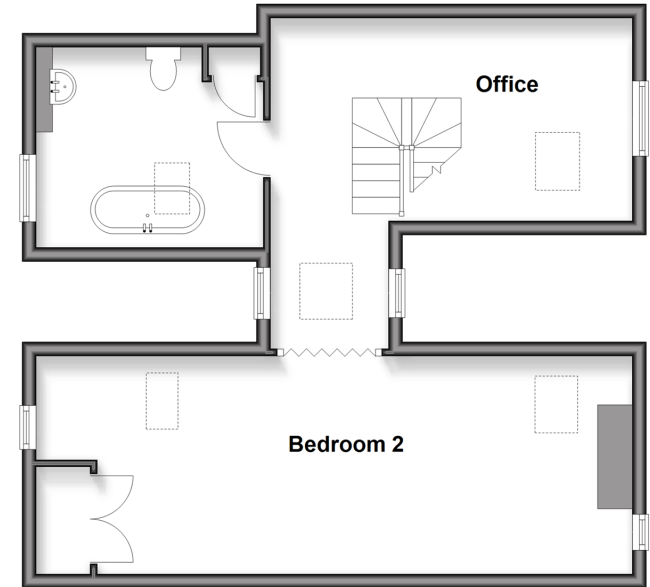
First Floor

Approx. 78.4 sq. metres (843.7 sq. feet)



Second Floor

Approx. 54.8 sq. metres (589.7 sq. feet)



Accommodation

GROUND FLOOR

Entrance hall
Lounge: 13'5 x 13'1 (4.09m x 3.99m)
Family Room : 13'11 x 12'0 (4.24m x 3.66m)
Kitchen/Dining Room : 29'4 x 13'1 (8.95m x 3.99m)
Utility Room
Cloakroom

FIRST FLOOR

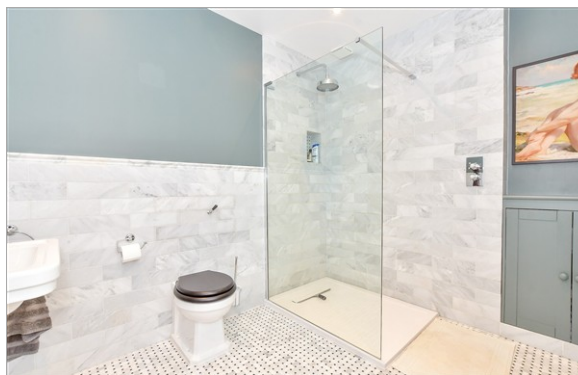
Landing
Bedroom 1: 16'0 x 13'6 (4.88m x 4.12m)
En-Suite Shower Room
Bedroom 3: 13'2 x 11'6 (4.02m x 3.51m)
Bedroom 4 : 15'6 x 13'0 (4.73m x 3.97m)
Shower Room

SECOND FLOOR

Bedroom 2: 28'8 x 11'5 (8.74m x 3.48m)
Office: 17'0 x 9'1 (5.19m x 2.77m)
Bathroom

OUTSIDE

Front & Rear Gardens
Garage & Off Road Parking



Main features

- **Elegant grade II Listed Georgian detached home**
- **Stylish bespoke fitted kitchen with walk in larder**
- **Utility room**
- **Three reception rooms**
- **Three bedrooms and two shower rooms located on first floor**
- **Second floor -Bedroom two with living area and contemporary bathroom**

Nearest Schools

Primary Schools: Emsworth Primary 0.6 miles, St James C of E Controlled Primary 0.7 miles, Southbourne Junior School 1.2 miles

Secondary Schools: Glenwood School 0.4 miles, Bourne

Transport Information

Train Stations: Emsworth 0.3 miles, Southbourne 1.1 miles, Warblington 1.5 miles

Address

Queen Street, Emsworth, Hampshire, PO10

Directions

For directions to this property please contact us.



cubitt&west
Helping you move forwards

Call Emsworth Branch 01243 377888 ■ cubittandwest.co.uk



Unable to display material information. Please check with the branch for material information details for this property