



Price
£240,000

Freehold

3x  1x  1x 

**St. Augustine Road,
Southsea, Hampshire,
PO4**

OVER 60?

Secure this property
for up to **59% less!**

cubitt&west
Helping you move forwards



Main features

- Off road parking potential subject to planning permission
- Sunny aspect rear garden
- In need of modernisation
- Located centrally in the popular location of Southsea
- All amenities are close by as well as lovely walks

Accommodation

GROUND FLOOR

Entrance Hallway

Lounge: 14'10 x 10'10 (4.52m x 3.30m)

Dining Room: 11'5 x 9'11 (3.48m x 3.02m)

Kitchen: 11'6 x 8'4 (3.51m x 2.54m)

Lean to

FIRST FLOOR

Landing

Bedroom 1: 14'3 x 12'6 (4.35m x 3.81m)

Bedroom 2: 11'0 x 8'4 (3.36m x 2.54m)

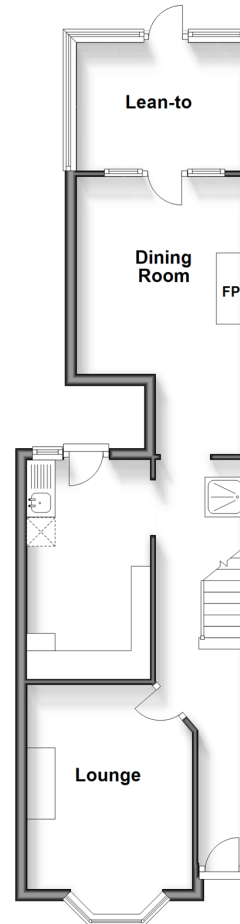
Bedroom 3: 11'6 x 10'0 (3.51m x 3.05m)

Bathroom

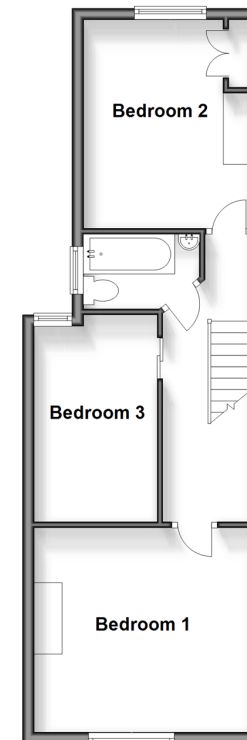
OUTSIDE

Rear Garden

Ground Floor
Approx. 48.3 sq. metres (519.9 sq. feet)



First Floor
Approx. 43.3 sq. metres (466.4 sq. feet)



Call Southsea - 023 9229 6396 ■ cubittandwest.co.uk

- If buying to let, the energy rating will need to be improved to at least 'E' rating before you can let the property
- Appliances & services are untested, dimensions are approximate and floor plans are not to scale

- Legal advice should be taken to verify fixtures/fittings, planning, alterations and/or lease details
- Through a Homewise Home For Life Plan people aged 60+ can secure this property for up to 59% less, by purchasing a Lifetime Lease.