



Guide Price
£230,000

Leasehold

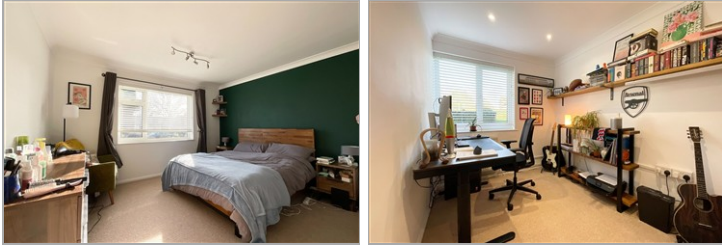
2x  1x  1x 

**Mulberry Court, Goring
Road, Goring-By-Sea,
Worthing, West Sussex,
BN12**

OVER 60?

Secure this property
for up to **59% less!**

cubitt & west
Helping you move forwards



Main features

- Immaculately presented & spacious apartment
- Light & airy rooms
- Excellent location, moments from bus, rail, & local amenities
- Long lease
- Direct access to a sunny patio

Accommodation

GROUND FLOOR

Entrance Hall

Kitchen: 12'6 x 9'2 (3.81m x 2.80m)

Lounge: 18'4 x 13'5 (5.59m x 4.09m)

Bedroom 1: 12'9 x 12'1 (3.89m x 3.69m)

Bedroom 2: 12'6 x 5'1 (3.81m x 1.55m)

Bathroom: 6'1 x 5'8 (1.86m x 1.73m)

OUTSIDE

Outside Storage

Communal Gardens

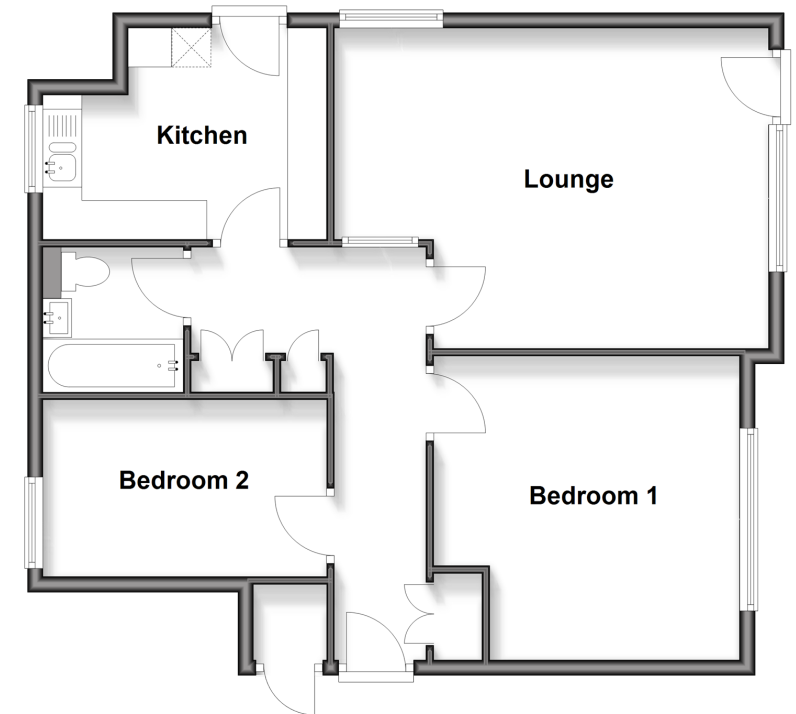
Private Patio

Call West Worthing - 01903 700657 ■ cubittandwest.co.uk

- A private rental licensing scheme applies to some properties in this area, please check with the Local Authority before proceeding
- Legal advice should be taken to verify fixtures/fittings, planning, alterations and/or lease details
- Appliances & services are untested, dimensions are approximate and floor plans are not to scale
- Through a Homewise Home For Life Plan people aged 60+ can secure this property for up to 59% less, by purchasing a Lifetime Lease

Ground Floor

Approx. 70.3 sq. metres (756.3 sq. feet)



40903555/20260219/ES/OM