



Price

£425,000

Leasehold

1x  1x  1x 

Burleigh Court, Cavendish Place, Brighton,
East Sussex, BN1

cubitt & west
Helping you move forwards



Main features

- Large Regency period property, with additional mezzanine space
- Allocated parking space
- Central seaside location with stunning sea views
- Chain free
- Well presented & ready to move into

Accommodation

FIRST FLOOR

Entrance Hall

Lounge/Kitchen: 20'7 x 14'11 (6.28m x 4.55m)

Bedroom 1 : 12'0 x 9'3 (3.66m x 2.82m)

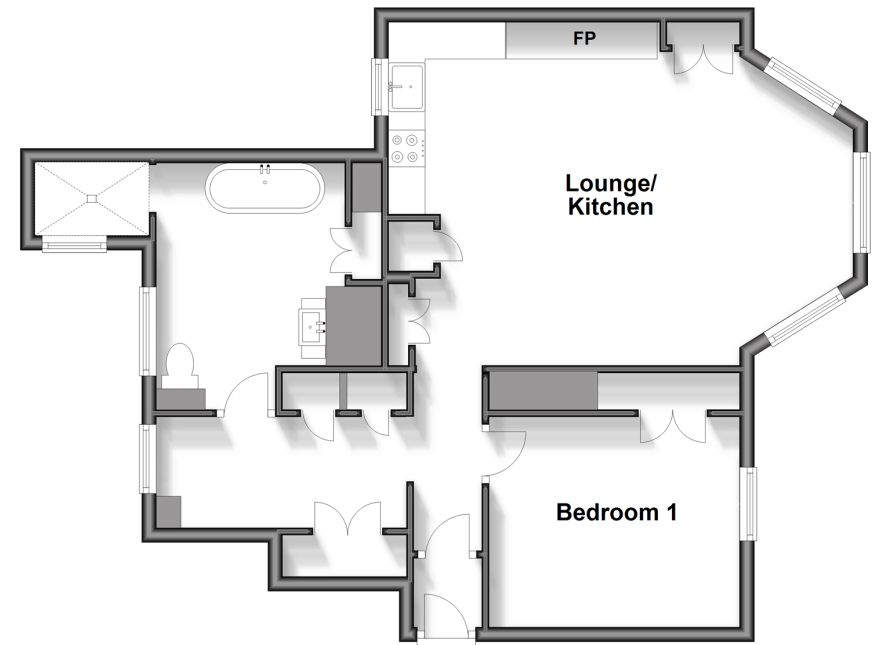
Mezzanine : 9'4 x 7'1 (2.85m x 2.16m)

Bathroom

Utility Space: 9'3 x 5'6 (2.82m x 1.68m)

First Floor

Approx. 62.3 sq. metres (670.6 sq. feet)



Call Central Brighton - 01273 820600 ■ cubittandwest.co.uk

- If buying to let, the energy rating will need to be improved to at least 'E' rating before you can let the property
- Legal advice should be taken to verify fixtures/fittings, planning, alterations and/or lease details
- Appliances & services are untested, dimensions are approximate and floor plans are not to scale



32412756/20241207/AF/JR