



Guide Price
£350,000

Leasehold

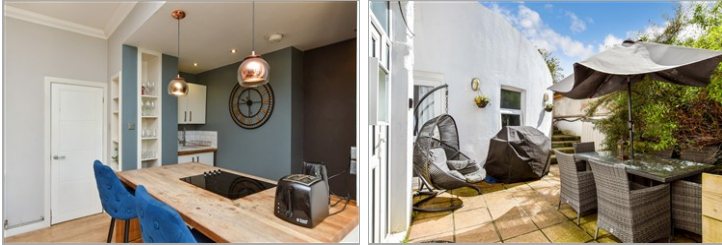
2x  1x  1x 

**Ditchling Road,
Brighton, East Sussex,
BN1**

OVER 60?

Secure this property
for up to **59% less!**

cubitt & west
Helping you move forwards



Main features

- Apartment with own street entrance, quietly tucked away from the road
- Sunny gardens
- Modern, move in condition - ideal first time buy
- Brighton City centre is walkable, as is the beach and local parks
- Close to train stations

Accommodation

LOWER GROUND FLOOR

Entrance Hall

Lounge : 18'4 x 14'7 (5.59m x 4.45m)

Kitchen : 7'4 x 6'0 (2.24m x 1.83m)

Bedroom 1: 9'9 x 9'9 (2.97m x 2.97m)

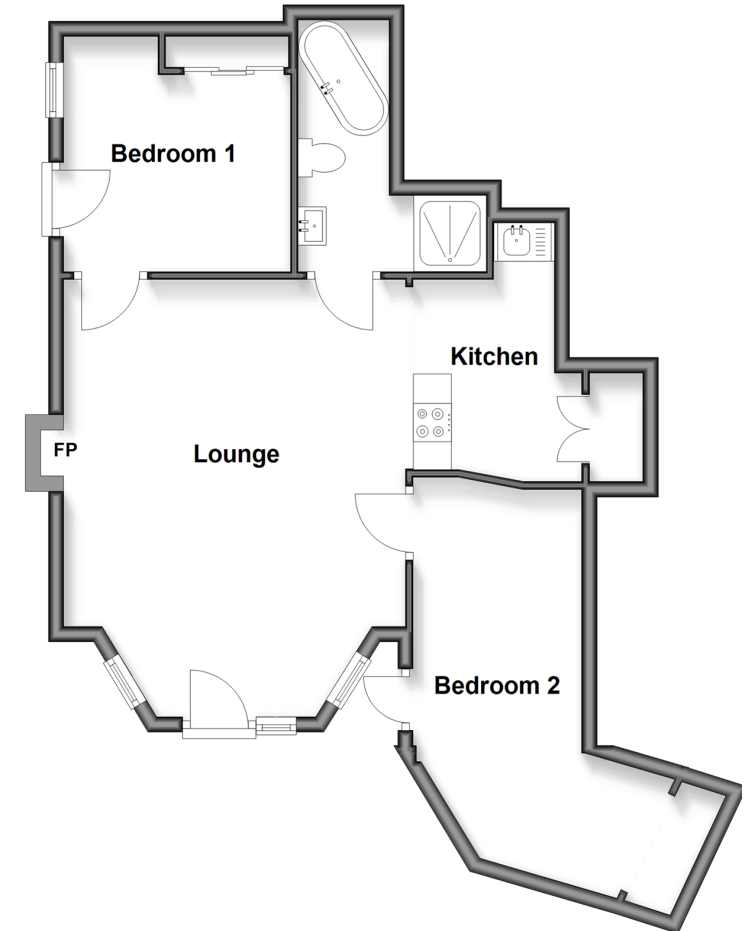
Bedroom 2: 19'8 x 6'7 (6.00m x 2.01m)

Bathroom

OUTSIDE

Rear Garden

Lower Ground Floor
Approx. 59.7 sq. metres (642.7 sq. feet)



Call Fiveways - 01273 564444 ■ cubittandwest.co.uk

- A private rental licensing scheme applies to some properties in this area, please contact us before proceeding
- Legal advice should be taken to verify fixtures/fittings, planning, alterations and/or lease details
- Appliances & services are untested, dimensions are approximate and floor plans are not to scale
- Through a Homewise Home For Life Plan people aged 60+ can secure this property for up to 50% less, by purchasing a Lifetime Lease.

EPC RATING	CURRENT:	POTENTIAL:
	30510733/20251004/AF/EM	