



Price

£91,250

Leasehold

2x  1x  1x 

Plot 202, Carmen Lane,
Maidstone, Kent, ME16

cubitt & west
Helping you move forwards

Main features

- Spacious entrance hall
- Downstairs W/C
- Modern open-plan kitchen/dining area
- Separate large living room
- Contemporary family bathroom
- Private rear garden
- Allocated parking spaces

Accommodation

GROUND FLOOR

Entrance Hall

Living Room : 13'10 x 12'0 (4.22m x 3.66m)

Kitchen/ Dining : 15'4 x 13'5 (4.68m x 4.09m)

WC: 6'3 x 3'5 (1.91m x 1.04m)

FIRST FLOOR

Landing

Bedroom 1 : 15'4 x 9'9 (4.68m x 2.97m)

Bathroom : 7'0 x 6'9 (2.14m x 2.06m)

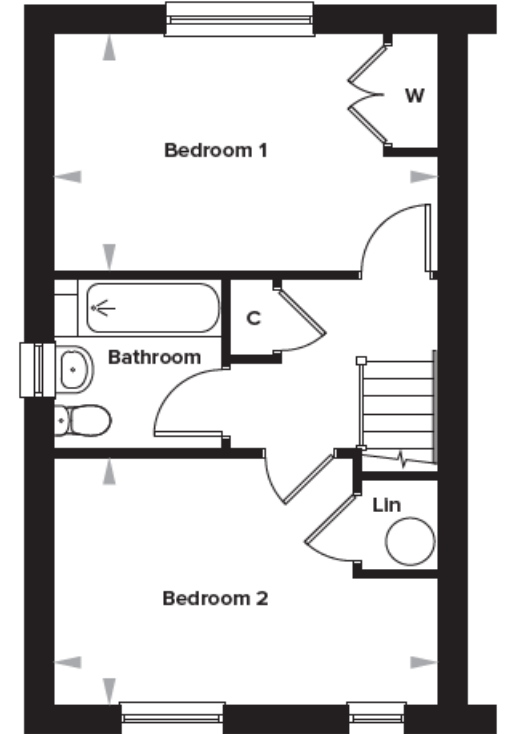
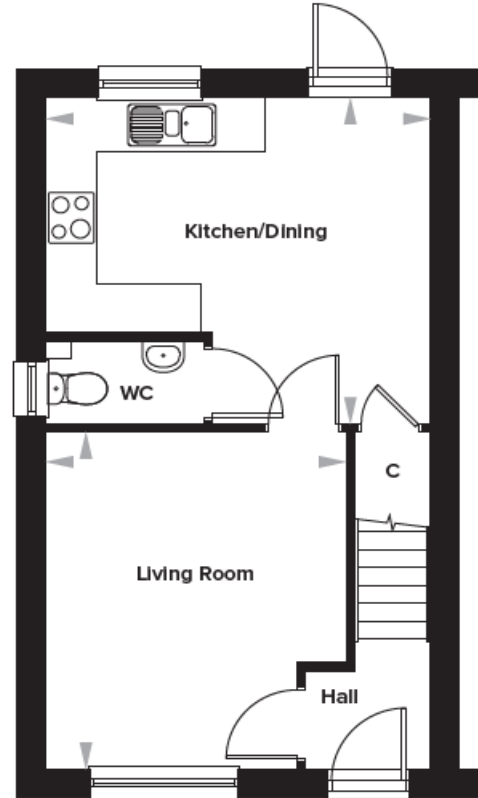
Bedroom 2 : 15'4 x 10'2 (4.68m x 3.10m)

OUTSIDE

Rear Garden

2x Allocated Parking Spaces

EV Charging Point



Call Shared Ownership - 01403 602681 ■ cubittandwest.co.uk

■ If buying to let, the energy rating will need to be improved to at least 'E' rating before you can let the property

■ Legal advice should be taken to verify fixtures/fittings, planning, alterations and/or lease details

■ Appliances & services are untested, dimensions are approximate and floor plans are not to scale