



**Modern
Auction**

**£230,000
Leasehold**

2x  2x  1x 

**Approach House,
Foxboro Road, Redhill,
Surrey, RH1**

cubitt & west
Helping you move forwards



Main features

- Modern and spacious 2 bedroom ground floor apartment
- Generous open plan lounge/diner and kitchen, great for entertaining
- For Sale by Modern Auction - T&Cs apply
- Subject to an undisclosed Reserve Price
- Buyer's fees apply

Accommodation

GROUND FLOOR

Entrance Hall

Bedroom 1: 12'2 x 9'9 (3.71m x 2.97m)

En-Suite Shower Room: 8'2 x 3'2 (2.49m x 0.97m)

Bathroom: 8'4 x 5'0 (2.54m x 1.53m)

Lounge/Diner: 14'9 x 14'3 (4.50m x 4.35m)

Kitchen Area: 10'5 x 5'6 (3.18m x 1.68m)

Bedroom 2: 11'4 x 8'3 (3.46m x 2.52m)

OUTSIDE

Garage

Allocated Parking

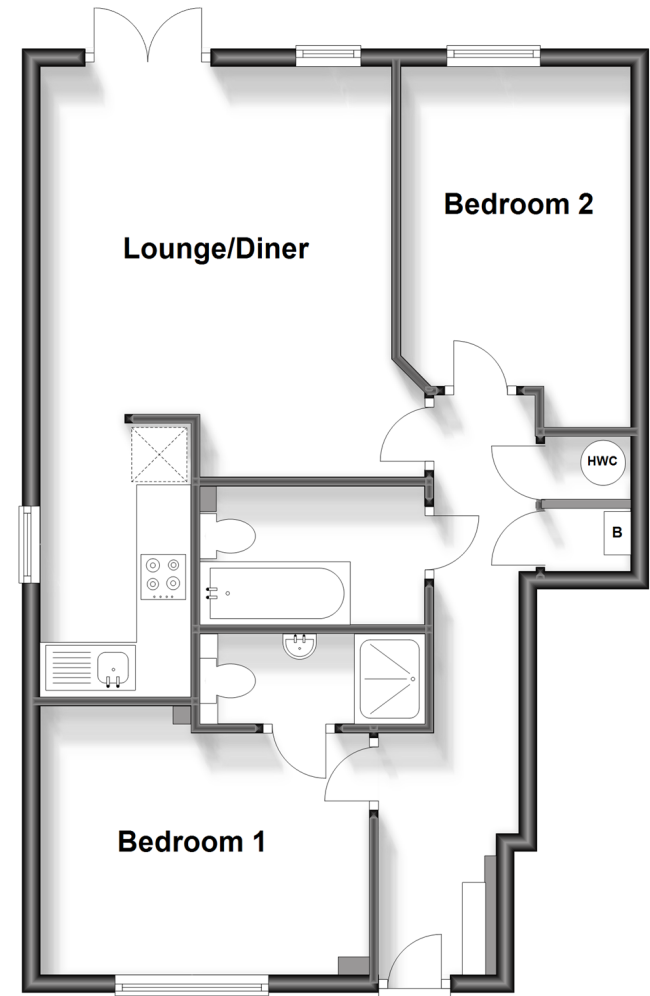
Visitor Parking Spaces

Call Redhill - 01737 778866 ■ cubittandwest.co.uk

- Legal advice should be taken to verify fixtures/fittings, planning, alterations and/or lease details
- Appliances & services are untested, dimensions are approximate and floor plans are not to scale

Ground Floor

Approx. 60.5 sq. metres (650.9 sq. feet)



23411074/20250224/JB2/JB2