



Price

£285,000

Leasehold

2x  1x  1x 

Martlets Court, Queen Street, Arundel

BN18

cubitt & west
Helping you move forwards



Main features

- Private outside space to sit
- Beautiful riverside views
- Updated kitchen and shower room
- Good storage with fitted wardrobes and a coat cupboard
- Excellent location with shops, post office, cafes, and riverside walks a stone's throw away

Accommodation

GROUND FLOOR

Entrance Hall: 13'7 x 6'1 (4.14m x 1.86m)

Lounge: 17'6 x 10'9 (5.34m x 3.28m)

Kitchen: 10'10 x 7'6 (3.30m x 2.29m)

Bedroom 1 : 13'9 up to fitted wardrobes x 9'1 (4.19m x 2.77m)

Bedroom 2 : 9'11 x 6'4 (3.02m x 1.93m)

Shower Room: 9'0 x 7'5 (2.75m x 2.26m)

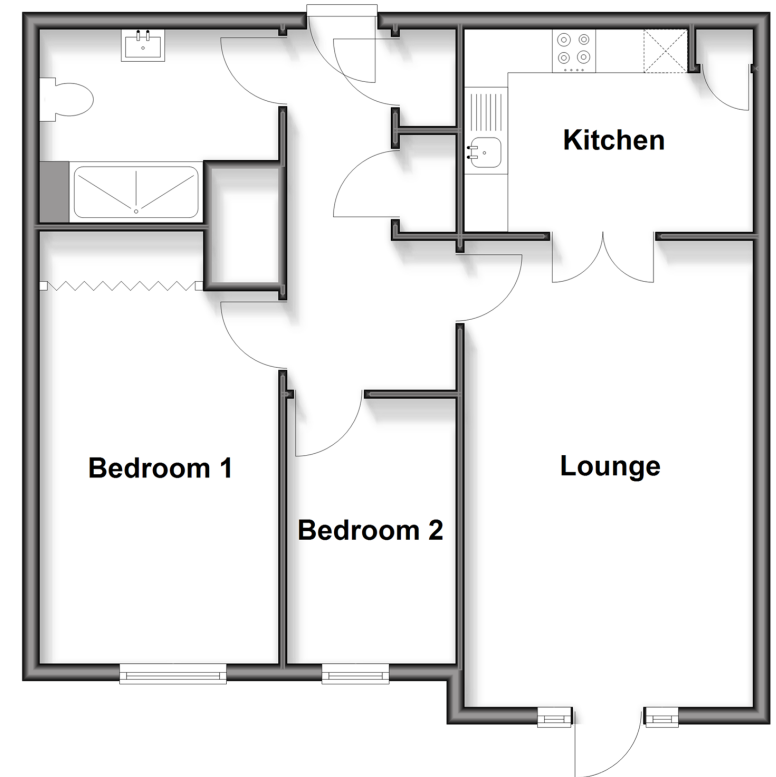
OUTSIDE

Communal Gardens

Residents' Parking

Ground Floor

Approx. 61.6 sq. metres (662.6 sq. feet)



Call Arundel - 01903 884420 ■ cubittandwest.co.uk

- Legal advice should be taken to verify fixtures/fittings, planning, alterations and/or lease details
- Appliances & services are untested, dimensions are approximate and floor plans are not to scale



23218173/20260121/RH/RH