



**Price**  
**£350,000**

**Freehold**

3x  1x  1x 

**Britten Close, Bewbush,  
Crawley, West Sussex,  
RH11**

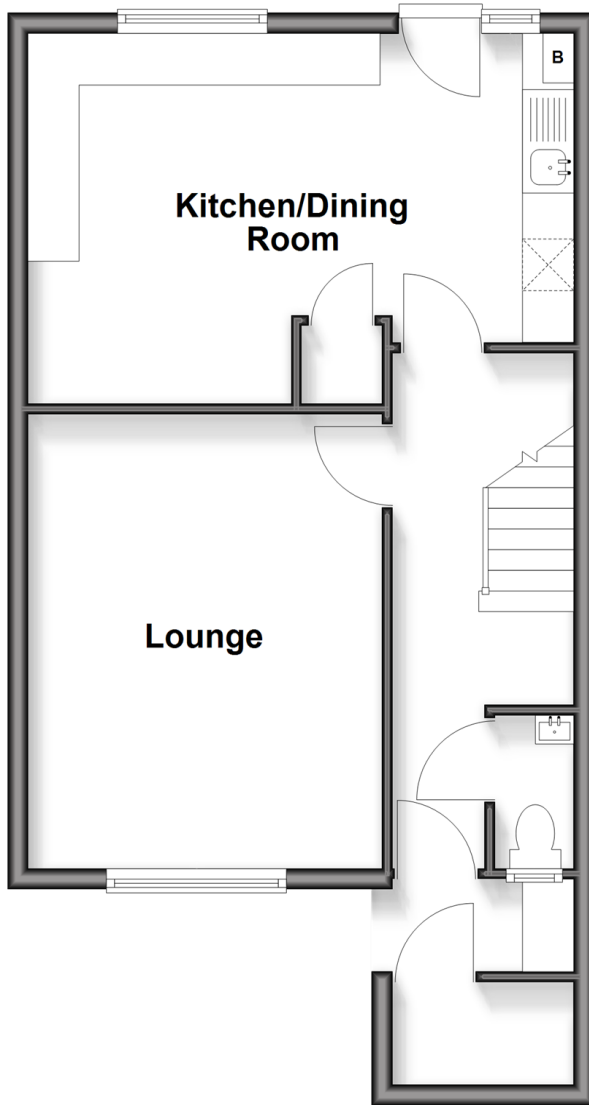
**OVER 60?**

Secure this property  
for up to **59% less!**

**cubitt & west**  
Helping you move forwards

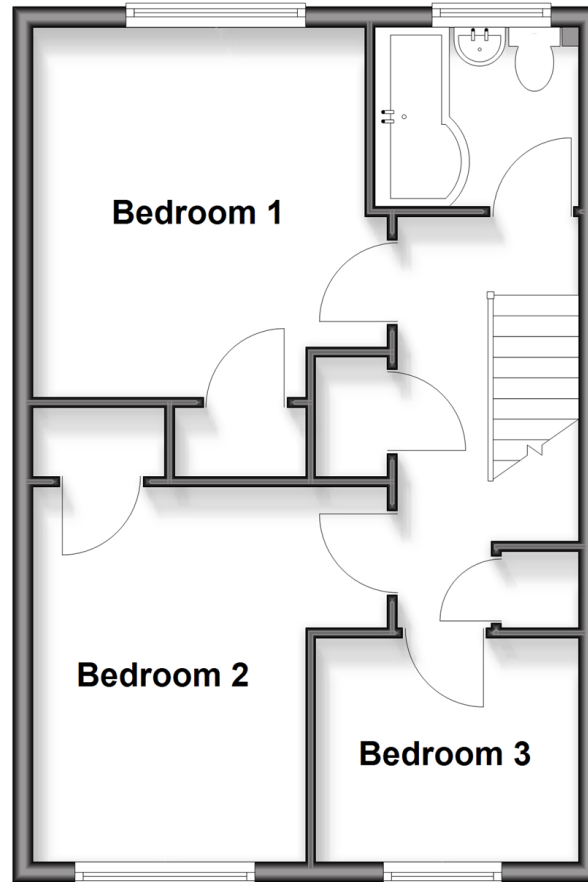
## Ground Floor

Approx. 46.7 sq. metres (502.9 sq. feet)



## First Floor

Approx. 43.0 sq. metres (463.1 sq. feet)



## Accommodation

### GROUND FLOOR

Entrance Porch

Entrance Hall

Downstairs Cloakroom

Kitchen/Dining Room: 17'8 (5.39m) x 11'8 (3.56m) narrowing to 8'9 (2.67m)

Lounge: 11'5 x 11'4 (3.48m x 3.46m)

### FIRST FLOOR

Landing

Bedroom 1: 11'8 (3.56m) x 11'4 (3.46m) narrowing to 10'8 (3.25m)

Bedroom 2: 11'9 (3.58m) x 11'5 (3.48m) narrowing to 8'10 (2.69m)

Bedroom 3: 8'5 x 6'10 (2.57m x 2.08m)

Bathroom: 6'4 x 5'8 (1.93m x 1.73m)

### OUTSIDE

Front Garden

Rear Garden

Driveway



## Main features

- End of terraced house in a quiet cul de sac location
- Large driveway for four cars
- Re-fitted bathroom and cloakroom
- Spacious kitchen/Diner with refitted units overlooking the garden
- Short walk to local shops, schools and public transport

### Nearest Schools

Primary Schools: Bewbush Community Primary 0.4 miles, Waterfield Primary 0.8 miles, Gossops Green Primary 0.8 miles

Secondary Schools: Holy Trinity CofE Secondary School

### Transport Information

Train Stations: Ifield 1.4 miles, Crawley 2.9 miles, Faygate 3.1 miles

### Address

Britten Close, Bewbush, Crawley, West Sussex, RH11

### Directions

For directions to this property please contact us.



**cubitt&west**  
Helping you move forwards

Call Crawley Branch 01293 522233 ■ [cubittandwest.co.uk](http://cubittandwest.co.uk)



■ Through a Homewise Home For Life Plan people aged 60+ can secure this property for up to 59% less, by purchasing a Lifetime Lease



20420790/20260415/SS/DC