



**Price**

**£110,000**

**Leasehold**

1x  1x  1x 

**Loxford Court,  
Cranleigh, Surrey, GU6**

**cubitt & west**  
Helping you move forwards





## Main features

- Light and bright retirement apartment set within the popular Elmbridge Retirement Village
- Stairlift fitted to communal hall
- On site facilities to include restaurant, bar, library and shop
- Plus a bus stop from the clubhouse directly into Cranleigh
- No onward chain

## Accommodation

### FIRST FLOOR

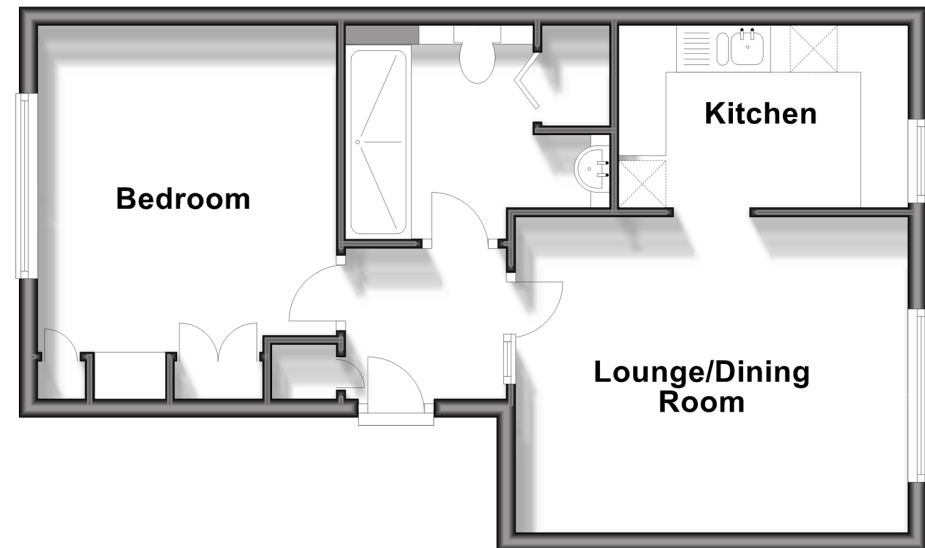
- Entrance Hallway
- Lounge/Dining Room: 13'11 x 11'2 (4.24m x 3.41m)
- Kitchen: 10'1 x 5'10 (3.08m x 1.78m)
- Bedroom : 13'0 x 10'5 (3.97m x 3.18m)
- Shower Room

### OUTSIDE

- Storage Cupboard
- Communal Grounds
- Off Road Parking

### First Floor

Approx. 42.9 sq. metres (461.6 sq. feet)



Call Cranleigh - 01483 271567 ■ [cubittandwest.co.uk](http://cubittandwest.co.uk)

■ Legal advice should be taken to verify fixtures/fittings, planning, alterations and/or lease details

■ Appliances & services are untested, dimensions are approximate and floor plans are not to scale



20306728/20250120/RW/KAB