



Price

£100,000

Leasehold

1x  1x  1x 

Queen Elizabeth Lodge,
Laleham Gardens,
Margate, Kent, CT9

OVER 60?

Secure this property
for up to **59% less!**

Wards
Helping you move forwards



Main features

- Ground floor retirement flat
- Over 60's only
- Lounge with doors opening out out letting the fresh air in
- Residents lounge to catch up with friends
- Communal gardens
- Handy laundry room
- Walking distance to shops, Margate sandy beaches and restaurants

Accommodation

GROUND FLOOR

Hallway

Lounge: 15'1 x 9'11 (4.60m x 3.02m)

Kitchen: 7'5 x 7'1 (2.26m x 2.16m)

Bedroom: 13'8 x 9'1 (4.17m x 2.77m)

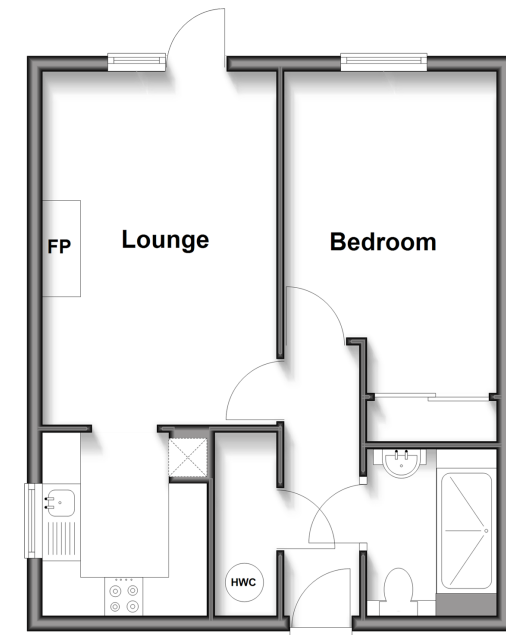
Shower Room : 6'10 x 5'6 (2.08m x 1.68m)

OUTSIDE

Communal Gardens

Ground Floor

Approx. 41.9 sq. metres (450.8 sq. feet)



Call Cliftonville - 01843 227447 ■ wardsokent.co.uk

- A private rental licensing scheme applies to some properties in this area, please contact us before proceeding
- Appliances & services are untested, dimensions are approximate and floor plans are not to scale

- Legal advice should be taken to verify fixtures/fittings, planning, alterations and/or lease details
- Through a Homewise Home For Life Plan people aged 60+ can secure this property for up to 59% less, by purchasing a Lifetime Lease.



15111652/20250626/DM/NF