



Price
£190,000

Leasehold

1x  1x  1x 

**Edgar Road, Cliftonville,
Margate, Kent, CT9**

OVER 60?

Secure this property
for up to **59% less!**

Wards
Helping you move forwards



Main features

- Some tender loving care required
- No on ward chain
- Your own private garden
- Basement for storage or perhaps an additional room
- A studio at the end of your garden could offer further accommodation or a home office

Accommodation

GROUND FLOOR

Hallway

Lounge: 18'8 x 14'4 (5.69m x 4.37m)

Bedroom : 19'7 x 12'1 (5.97m x 3.69m)

Kitchen: 18'4 x 8'9 (5.59m x 2.67m)

Utility Area

Shower Room

BASEMENT

Cellar

OUTSIDE

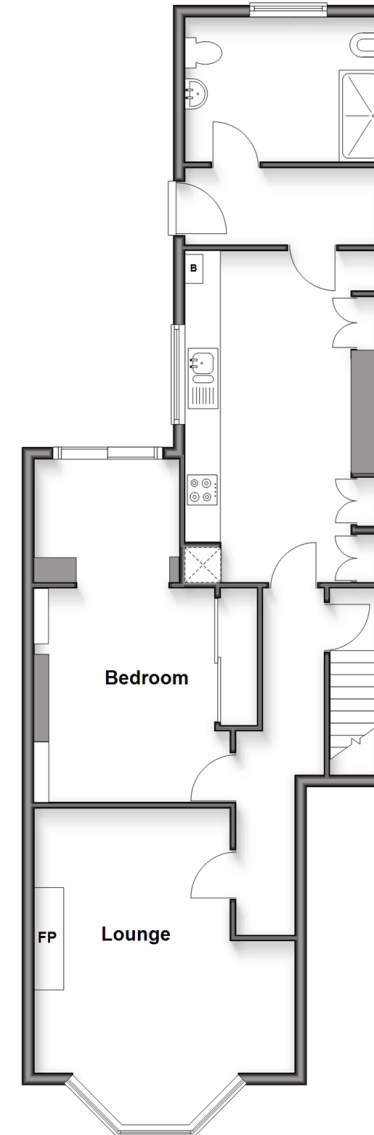
Rear Garden

Studio 1

Studio 2

Ground Floor

Approx. 76.6 sq. metres (824.3 sq. feet)



Basement

Approx. 10.4 sq. metres (112.4 sq. feet)



Call Cliftonville - 01843 227447 ■ wardsofkent.co.uk

- A private rental licensing scheme applies to some properties in this area, please contact us before proceeding
- Legal advice should be taken to verify fixtures/fittings, planning, alterations and/or lease details
- Appliances & services are untested, dimensions are approximate and floor plans are not to scale
- Through a Homewise Home For Life Plan people aged 60+ can secure this property for up to 59% less, by purchasing a Lifetime Lease.



15111479/20250624/DM/VH