



Guide Price
£325,000

Freehold

2x  1x  1x 

**Crispin Close, New
Romney, Kent, TN28**

OVER 60?

Secure this property
for up to **59% less!**

Wards
Helping you move forwards



Main features

- **Stunning immaculate home**
- **Partially converted garage as a home office**
- **Bright and airy accommodation throughout**
- **High-end kitchen and bathroom**
- **Great location walking distance to town and schools**

Accommodation

GROUND FLOOR

Entrance Hall
 Lounge: 13'8 x 13'4 (4.17m x 4.07m)
 Kitchen: 11'7 x 7'3 up to alcove (3.53m x 2.21m)
 Cloakroom

FIRST FLOOR

Landing
 Bedroom 1: 13'8 x 8'7 (4.17m x 2.62m)
 Bedroom 2: 11'6 x 10'3 (3.51m x 3.13m)
 Bathroom

OUTBUILDING

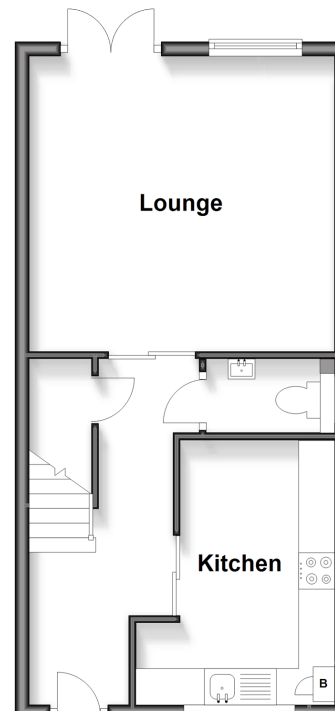
Garage
 Room 1: 11'2 x 10'5 (3.41m x 3.18m)

OUTSIDE

Off Road Parking

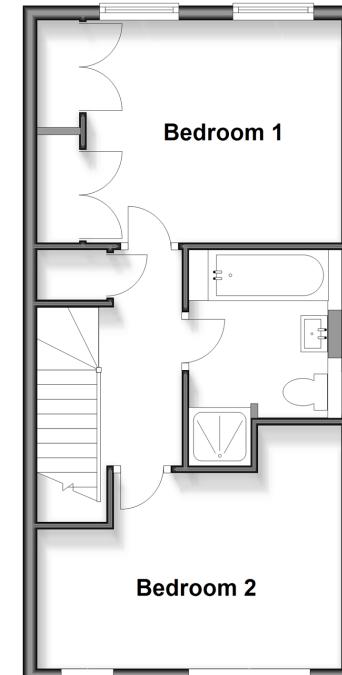
Ground Floor

Approx. 38.0 sq. metres (408.7 sq. feet)



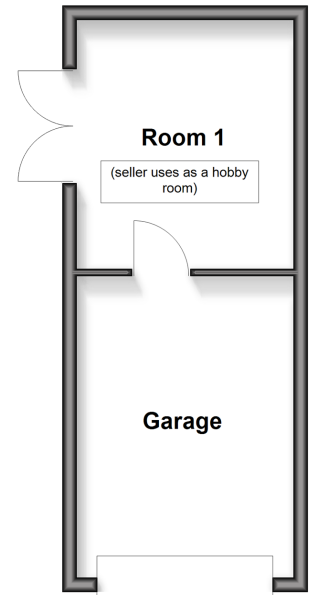
First Floor

Approx. 38.0 sq. metres (408.7 sq. feet)



Outbuilding

Approx. 23.2 sq. metres (250.1 sq. feet)



Unable to display material information. Please check with the branch for material information details for this property



13500K5T/20260427/AH/CA