



Guide Price
£230,000

Freehold

3x  1x  1x 

**Tufton Street,
Maidstone, Kent ME14**

OVER 60?

Secure this property
for up to **59% less!**

Wards
Helping you move forwards



Main features

- Chain free house
- Well presented throughout
- Ideal for first time buyers
- Situated within walking distance to Maidstone East station
- Generous size bedrooms

Accommodation

GROUND FLOOR

- Lounge: 11'0 x 10'11 (3.36m x 3.33m)
- Kitchen: 11'0 x 11'0 (3.36m x 3.36m)
- Lobby
- Shower Room

FIRST FLOOR

- Landing
- Bedroom 1: 11'0 x 10'11 (3.36m x 3.33m)
- Bedroom 2: 11'0 x 8'0 (3.36m x 2.44m)

SECOND FLOOR

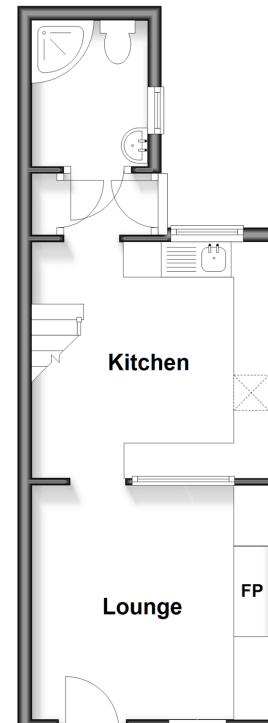
- Loft Room: 13'0 x 9'11 (3.97m x 3.02m)

OUTSIDE

- Rear Garden

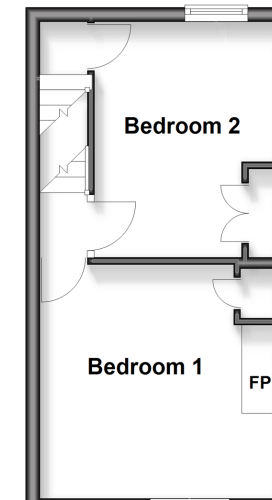
Ground Floor

Approx. 28.2 sq. metres (303.1 sq. feet)



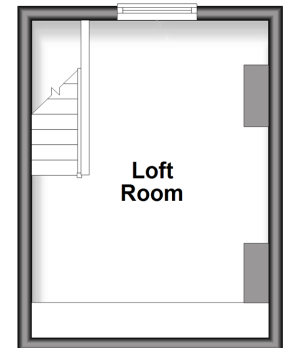
First Floor

Approx. 23.1 sq. metres (248.6 sq. feet)



Second Floor

Approx. 15.3 sq. metres (164.2 sq. feet)



Call Maidstone - 01622 683737 ■ wardsof Kent.co.uk

■ Through a Homewise Home For Life Plan people aged 60+ can secure this property for up to 59% less, by purchasing a Lifetime Lease



131019WK/20260415/AS/AS