



**Guide Price**  
**£120,000**

**Leasehold**

2x  1x  1x 

**Wentworth Close,  
Station Road, Lyminge,  
Folkestone, Kent, CT18**

**OVER 60?**

Secure this property  
for up to **59% less!**

*Wards*  
Helping you move forwards



## Main features

- No onward chain
- First floor retirement apartment for over the 60s
- Stairlift, good size bathroom
- Communal lounge and laundry
- Gas central heating, double glazed

## Accommodation

### FIRST FLOOR

#### Entrance Hall

Lounge: 11'11 x 11'9 (3.63m x 3.58m)

Kitchen: 8'11 x 5'11 (2.72m x 1.80m)

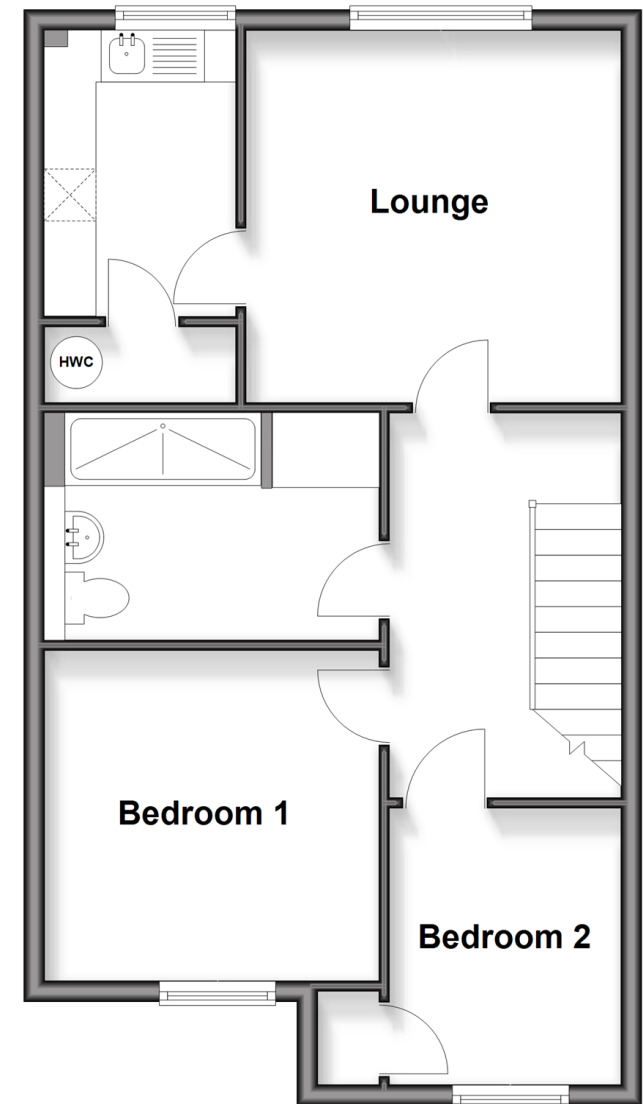
Bedroom 1: 10'6 x 10'5 (3.20m x 3.18m)

Bedroom 2: 8'8 x 7'5 (2.64m x 2.26m)

Shower Room: 10'5 x 7'1 (3.18m x 2.16m)

## First Floor

Approx. 54.0 sq. metres (580.8 sq. feet)



Call Hythe - 01303 267473 ■ [wardsof Kent.co.uk](http://wardsof Kent.co.uk)

- Legal advice should be taken to verify fixtures/fittings, planning, alterations and/or lease details
- Appliances & services are untested, dimensions are approximate and floor plans are not to scale
- Through a Homewise Home For Life Plan people aged 60+ can secure this property for up to 59% less, by purchasing a Lifetime Lease



12825261/20260129/MEL/MIB