



**Guide Price**  
**£375,000**

**Freehold**

3x  1x  1x 

**Acton Road, Whitstable,  
Kent, CT5**

**OVER 60?**

Secure this property  
for up to **59% less!**

*Wards*  
Helping you move forwards



## Main features

- **Spacious end-of-terrace house**
- **Open plan living**
- **Chain free**
- **Large sun room floods the downstairs with light**
- **Garden cabin ideal for conversion to home office or business space**

## Accommodation

### GROUND FLOOR

Hallway  
 Lounge: 23'5 (7.14m) narrowing to 14'8 (4.47m) x 12'11 (3.94m)  
 Kitchen/Diner: 13'0 x 11'7 (3.97m x 3.53m)  
 Garden Room: 18'6 x 9'2 (5.64m x 2.80m)  
 Cloakroom

### FIRST FLOOR

Landing  
 Bedroom 1: 12'5 x 11'9 (3.79m x 3.58m)  
 Bedroom 2: 11'4 x 9'9 (3.46m x 2.97m)  
 Bedroom 3 : 8'5 x 7'5 (2.57m x 2.26m)  
 Bathroom

### OUTSIDE

Rear Garden

### OUTBUILDING

Cabin

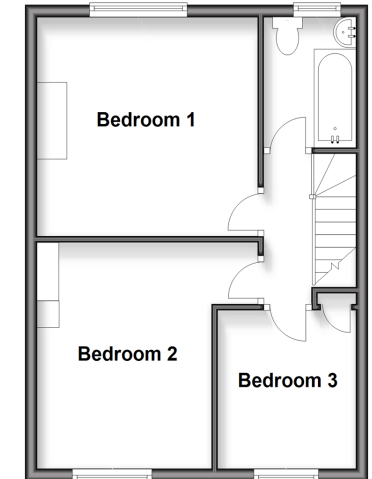
### Ground Floor

Approx. 54.0 sq. metres (581.4 sq. feet)



### First Floor

Approx. 39.3 sq. metres (423.4 sq. feet)



Call Whitstable - 01227 772272 ■ [wardsofkent.co.uk](http://wardsofkent.co.uk)

■ Through a Homewise Home For Life Plan people aged 60+ can secure this property for up to 59% less, by purchasing a Lifetime Lease



12034015/20260320/AR/CJ