



Price
£310,000

Leasehold

2x  1x  2x 

**Ash Close, Merstham,
Redhill, Surrey, RH1**

cubitt & west
Helping you move forwards



Main features

- Split Level Maisonette
- Garage
- Sold before Open House

Accommodation

FIRST FLOOR

Entrance Hall

Lounge: 15'8 x 13'6 (4.78m x 4.12m)

Dining Area: 10'4 x 9'6 (3.15m x 2.90m)

Kitchen: 10'5 x 8'5 (3.18m x 2.57m)

Bedroom 1: 17'2 x 10'9 (5.24m x 3.28m)

Bedroom 2: 10'4 x 10'3 (3.15m x 3.13m)

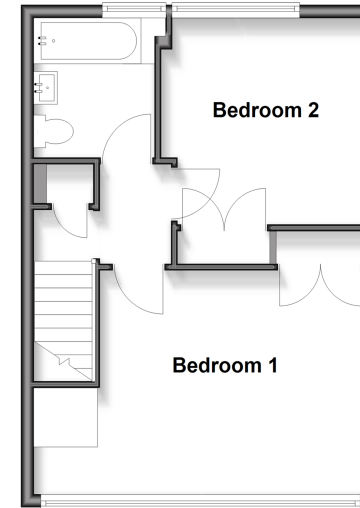
Bathroom

OUTSIDE

Garage

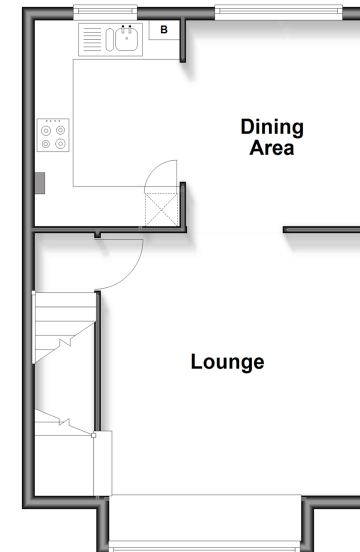
Second Floor

Approx. 37.9 sq. metres (407.5 sq. feet)



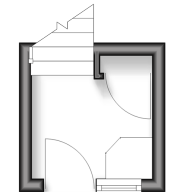
First Floor

Approx. 40.2 sq. metres (433.2 sq. feet)



Ground Floor

Approx. 3.5 sq. metres (38.1 sq. feet)



Unable to display material information. Please check with the branch for material information details for this property



11530352/20260421/AB/JB2