

OVER 60?

Secure this property
for up to **59% less!**



Guide Price

£825,000

Freehold

5x  1x  3x 

Bredhurst Road, Wigmore, Gillingham,

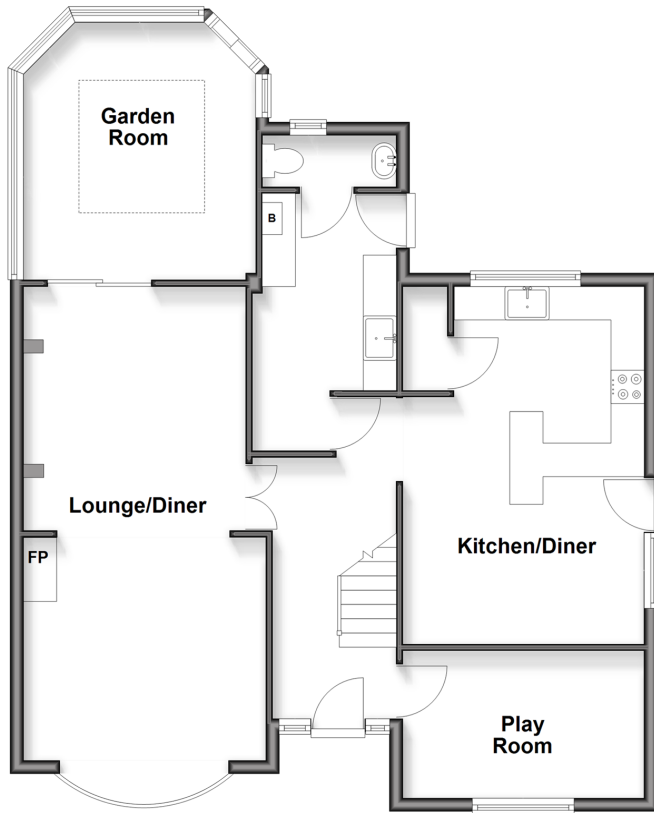
Kent, ME8

Wards

Helping you move forwards

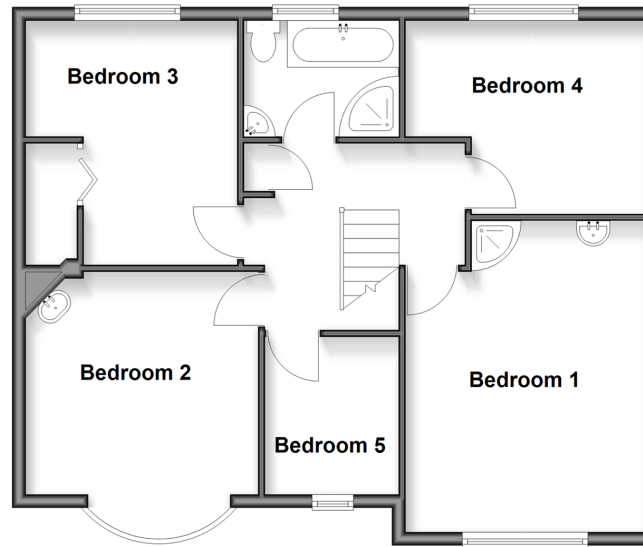
Ground Floor

Approx. 85.8 sq. metres (923.1 sq. feet)



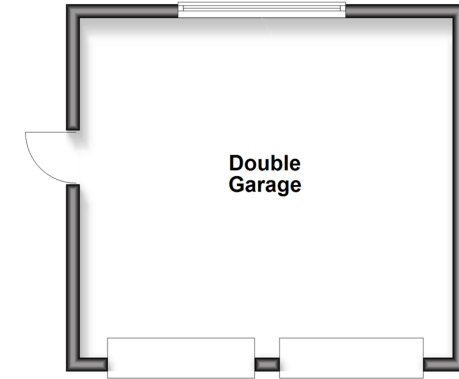
First Floor

Approx. 69.8 sq. metres (750.8 sq. feet)



Outbuilding

Approx. 27.9 sq. metres (300.2 sq. feet)



Accommodation

GROUND FLOOR

Entrance Hall

Utility : 12'7 x 6'9 (3.84m x 2.06m)

Lounge/Diner : 26'4 x 10'9 (8.03m x 3.28m)

Garden Room: 12'7 x 11'1 (3.84m x 3.38m)

Kitchen/Diner : 12'6 x 12'1 (3.81m x 3.69m)

Play Room : 12'0 x 7'5 (3.66m x 2.26m)

FIRST FLOOR

Landing

Bedroom 1 : 16'4 x 12'0 (4.98m x 3.66m)

Bedroom 2 : 13'7 x 11'1 (4.14m x 3.38m)

Bedroom 3 : 11'9 x 10'5 (3.58m x 3.18m)

Bedroom 4 : 11'9 x 9'5 (3.58m x 2.87m)

Bedroom 5 : 7'2 x 6'9 (2.19m x 2.06m)

Bathroom: 7'4 x 5'8 (2.24m x 1.73m)

OUTBUILDING

Double Garage : 18'0 x 17'3 (5.49m x 5.26m)

OUTSIDE

Front Garden

Rear Garden

Driveway



Main features

- An attractive and extended property that would be a fantastic long term family home
- Impressive 26ft lounge/diner and character features throughout
- Huge loft with potential for converting
- Useful utility room and downstairs cloakroom
- Generous and established rear garden
- Double garage and extensive driveway
- Highly sought after Wigmore location



Nearest Schools

Primary Schools: Fairview Community Primary, Deanwood Primary Education Technology School, Park Wood Junior School
Secondary Schools: Rainham School for Girls, The Howard School, Rainham Mark Grammar School



Transport Information

Train Stations: Rainham 1.6 miles, Gillingham 2.8 miles, Chatham 3.4 miles



Address

Bredhurst Road, Wigmore, Gillingham, Kent, ME8



Directions

For directions to this property please contact us.



Wards
Helping you move forwards

Call Rainham Branch 01634 373531 ■ wardsofkent.co.uk



Unable to display material information. Please check with the branch for material information details for this property



11339211/20260421/CW/DW