



Guide Price
£80,000

Leasehold

1x  1x  1x 

**Chislet Court, Pier
Avenue, Herne Bay,
Kent, CT6**

OVER 60?

Secure this property
for up to **59% less!**

Wards
Helping you move forwards



Main features

- First floor retirement apartment with lift
- Visitors parking, secured entrance
- No chain, electric heating
- Open kitchen area to lounge with ample cupboard space
- Bedroom with fitted wardrobes, guest suite for visitors

Accommodation

FIRST FLOOR

Entrance Hallway

Shower Room

Lounge/Diner: 16'3 x 13'2 (4.96m x 4.02m)

Kitchen: 10'10 x 7'7 (3.30m x 2.31m)

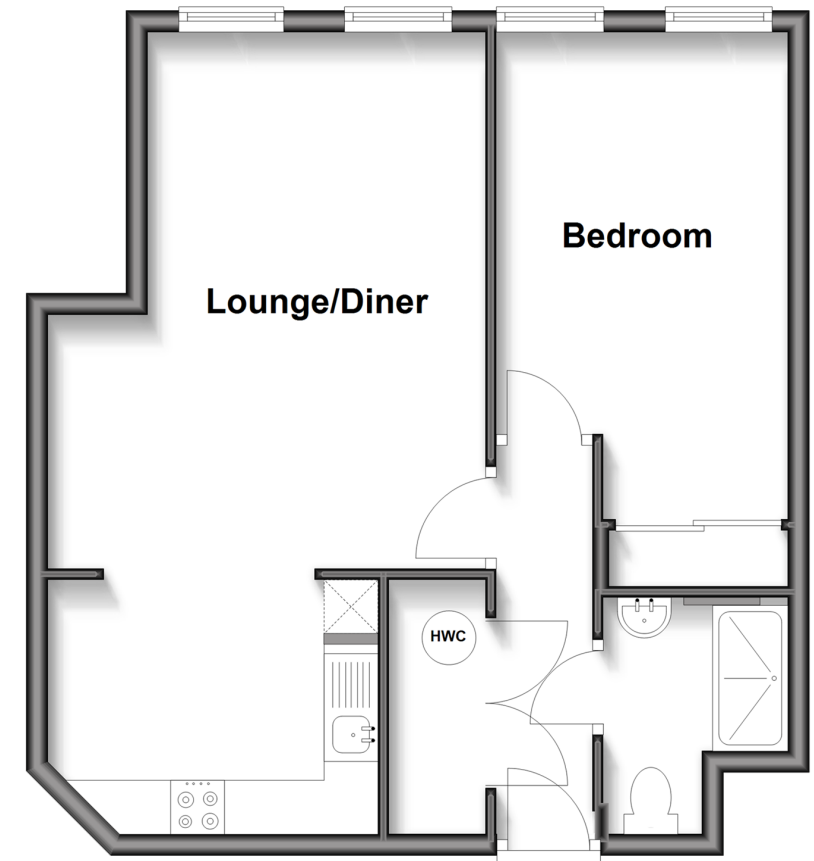
Bedroom: 14'6 x 8'8 (4.42m x 2.64m)

OUTSIDE

Communal Garden

First Floor

Approx. 47.9 sq. metres (515.2 sq. feet)



Call Herne Bay - 01227 361226 ■ wardsof Kent.co.uk

- Legal advice should be taken to verify fixtures/fittings, planning, alterations and/or lease details
- Appliances & services are untested, dimensions are approximate and floor plans are not to scale
- Through a Homewise Home For Life Plan people aged 60+ can secure this property for up to 50% less, by purchasing a Lifetime Lease



11238820/20260102/SMS/GG