



Pandora House  
Oxenden Square | Herne Bay | Kent | CT6 8TW

# Step inside

## Pandora House

This beautifully restored 1920s detached home, enriched with authentic Art Deco detailing, offers a rare blend of elegance, craftsmanship and modern luxury. Sensitively refurbished by the current owners, the property retains its period character while embracing contemporary comfort. Set behind the remotely operated automated electric gated driveway, it immediately impresses with its striking façade and refined architectural lines. Inside, the home unfolds with light, space and timeless style.

The home opens from the entrance hall into a triple aspect living room of exceptional presence and charm. Bathed in natural light throughout the day, this magnificent space is framed by original cornicing, a striking feature fireplace, and beautifully crafted window seats that invite quiet moments of relaxation. It is a room that effortlessly balances grandeur with warmth. A dedicated games room extends the home's generous living spaces, offering a versatile retreat designed for leisure and entertainment. Whether enjoyed as a cinema lounge, a family hub, or a sophisticated evening escape, it provides a luxurious setting for gatherings of all kinds.

At the heart of the property lies a stunning Art Deco inspired kitchen, where timeless design meets contemporary craftsmanship. High end integrated appliances including a Rangemaster induction cooker, boiling water tap and wine fridge. Sleek cabinetry and a beautifully considered layout create a culinary environment of exceptional quality. The under floor heated kitchen flows seamlessly into the dining area, where French doors open directly onto the garden, enhancing the sense of space and encouraging effortless indoor outdoor living.

The main bedroom suite is a serene sanctuary, designed to offer complete tranquillity at the end of the day. Generous in scale and beautifully appointed, it features its own luxurious ensuite, creating a private retreat that feels indulgent, calming and effortlessly sophisticated. Four further bedrooms continue the home's sense of elegance and proportion. Each room enjoys its own unique charm, enhanced by period character, warm natural light and the generous dimensions typical of a

property of this era. These versatile spaces are ideal for family, guests or the creation of a study or dressing room. The family bath/shower room is a beautifully designed space where classic style meets modern indulgence. Thoughtfully finished with high quality fittings and refined detailing, it offers a luxurious environment for both relaxation and daily routines.

The grounds unfold into a beautifully landscaped garden, where mature planting, a sweeping lawn and thoughtfully designed areas create a sense of calm and sophistication. Every corner invites relaxation, offering a tranquil backdrop to the home's striking architecture. At the heart of the outdoor space lies the impressive swimming pool, heated via an air source heat pump and complete with a retractable cover, there is also swim jet and under water lighting for year round enjoyment. This luxurious feature elevates the garden into a private resort style retreat, perfect for both invigorating morning swims and serene evening dips.

A charming summer house sits nestled within the garden, offering endless possibilities, from a creative studio or home gym to a peaceful hideaway for reading and relaxation. Its versatility enhances the lifestyle appeal of the property.

For those who appreciate space and practicality, the garage and workshop provide generous, secure accommodation for vehicles, hobbies or storage. These well designed areas cater effortlessly to enthusiasts and collectors alike. This area is further enhanced by an electric vehicle charging point.

Completing the outdoor experience is a secluded terrace with BBQ area, a private haven ideal for alfresco dining, summer celebrations and intimate evening gatherings. Surrounded by greenery, it offers a perfect blend of privacy and atmosphere.

Planning permission was previously granted for a dormer extension, which provides scope for further first floor accommodation and additional bedroom space if desired.













# Seller Insight

“ From the moment we first arrived at the private Oxenden Square, we knew this was a home that offered something truly special. Set within one of Herne Bay's most desirable residential pockets, the property combines peaceful living with the unmistakable charm of the Kentish coastline, just moments from the seafront. The gentle sound of the waves, the fresh sea air and the ability to stroll to the beach within minutes have made everyday life here feel like a retreat.

Spending time in this location has given us the perfect balance of tranquillity and convenience. The beach is within 250 metres, and short walk brings you to Herne Bay's vibrant promenade, independent cafés, stylish eateries and the welcoming local shops that give the town its warm, community driven character. Whether it's picking up fresh pastries in the morning, enjoying a relaxed lunch overlooking the water, or browsing the boutiques, everything feels wonderfully close at hand.

For essentials, the area offers excellent local amenities, including supermarkets, pharmacies, leisure facilities and well regarded schools — all contributing to the ease and comfort of daily life.

Travel connections have also been a major advantage. The nearby Herne Bay railway station provides direct links to Canterbury, Whitstable, and London, making commuting or weekend city trips effortless. Road connections via the A299 ensure smooth access across Kent and beyond, whether heading to the coast, countryside or major transport routes.

What we have loved most about Oxenden Square is the lifestyle it offers — a peaceful, elegant home environment paired with the joy of seaside living and the practicality of excellent local services. It's a place where mornings can begin with a walk along the shore, afternoons can be spent enjoying the town's amenities, and evenings can be savoured in the comfort and privacy of a truly beautiful home.”\*

\* These comments are the personal views of the current owner and are included as an insight into life at the property. They have not been independently verified, should not be relied on without verification and do not necessarily reflect the views of the agent.







### Travel

By Road:	
Herne Bay railway station	0.6 miles
Canterbury	9.6 miles
Dover docks	27.8 miles
Eurotunnel	25.6 miles
Charing Cross	68.6 miles
Gatwick airport	71.2 miles

By Train from Herne Bay	
High-Speed St. Pancras	1hr 20 mins
Dover Priors	54 mins
Charing Cross	1hr 50 mins
Victoria	1hr 32 mins
Canterbury	35 mins
Canterbury West to St Pancras	54 mins

### Leisure Clubs & Facilities

David Llyod Herne Bay	01227 949635
Hampton Pier Yacht Club	01227 364749
Herne Bay Sailing Club	01227 375650
Herne Bay Angling Club	01227 362127
Whitstable Seasalter Golf Club	01227 272020
Chestfield Golf Club	01227 794411

### Healthcare

Beltinge and Reculver Surgery	01227 374902
Whitstable and Tankerton Hospital	01227 594400
Kent and Canterbury Hospital	01227 766877
Chaucer Hospital	01227 825100
Estuary View Medical Centre	01227 284300

### Education

Primary Schools:	
Herne Junior	01227 374069
Reculver C. of E. Primary	01227 375907
Herne Bay Junior	01227 374608
The Kings Junior school	01227 714000

### Secondary Schools:

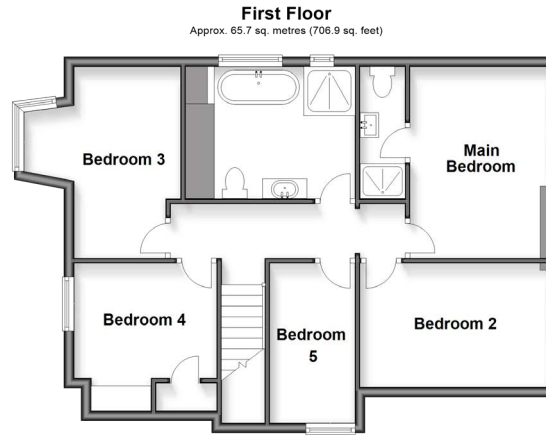
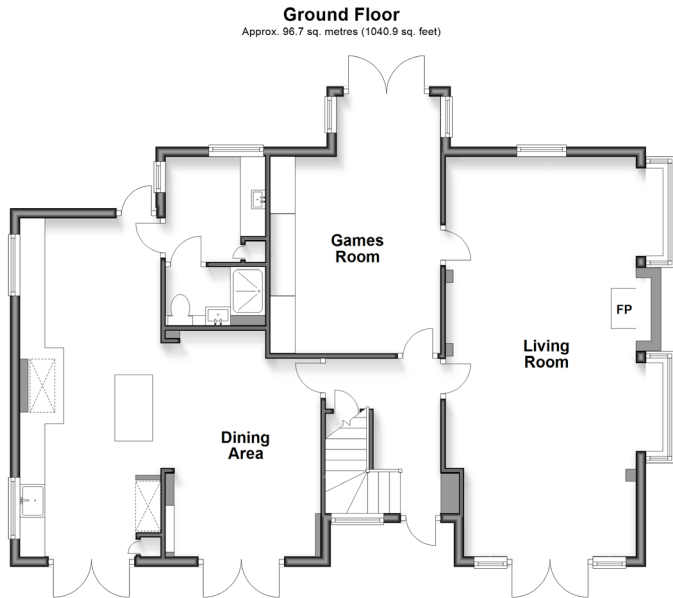
Herne Bay High School	01227 361221
The King's School	01227 595501
St. Edmund's	01227 475600
Kent College	01227 813906
Simon Langton Girls Grammar	01227 463711
Simon Langton Boys Grammar	01227 463567

### Entertainment

Salt and Light	01227 637403
The Rising Sun	01227 851262
Punch Tavern	01227 710474
A Casa Mia	01227 372947
The Sportsman	01227 273370
Marlowe Theatre	01227 787787
The Kings Hall	01227 374188
Kavanagh Cinema	01227 360569

### Local Attractions / Landmarks

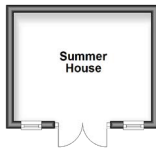
Blean Woods Nature Reserve	01227 464898
Whitstable Museum and Gallery	01227 276998
Wildwood Wildlife Park	01227 712111
Whitstable Harbour	01227 262433
Whitstable Castle	01227 281726
Herne Bay pier	
Reculver Country Park and Towers	
Canterbury Cathedral	



**Outbuilding 1**  
Approx. 31.4 sq. metres (336.4 sq. feet)



**Outbuilding 2**  
Approx. 10.0 sq. metres (117.0 sq. feet)



**Outbuilding 3**  
Approx. 8.6 sq. metres (95.1 sq. feet)



**GROUND FLOOR**

- Entrance Hall
- Living Room 26'11 x 15'1 into bay (8.21m x 4.60m)
- Games Room 17'5 (5.31m) narrowing to 12'1 (3.69m) x 11'1 (3.38m)
- Dining Area 14'10 x 9'2 (4.52m x 2.80m)
- Kitchen 22'4 x 9'2 (6.81m x 2.80m)
- Utility 6'8 x 6'8 (2.03m x 2.03m)
- Shower Room

**FIRST FLOOR**

- Landing
- Bedroom 4 9'4 x 7'4 (2.85m x 2.24m)
- Bedroom 3 12'8 (3.86m) x 10'3 (3.13m) narrowing to 7'0 (2.14m)
- Bedroom 5 10'8 x 5'4 (3.25m x 1.63m)
- Bathroom 9'1 x 8'8 (2.77m x 2.64m)
- Bedroom 2 12'5 x 8'2 (3.79m x 2.49m)
- Main Bedroom 12'1 x 9'2 (3.69m x 2.80m)
- En Suite Shower Room

**OUTBUILDING 1**

- Garage 16'6 x 9'1 (5.03m x 2.77m)
- Workshop 20'2 x 9'2 (6.15m x 2.80m)

**OUTBUILDING 2**

- Summer House

**OUTBUILDING 2**

- Pool Store

**OUTSIDE**

- Gated Driveway
- Garden
- Outdoor Heated Pool
- Terrace

Council Tax Band: F  
Tenure: Freehold

Score	Energy rating	Current	Potential
92+	A		
81-91	B		84 B
69-80	C	69 C	
55-68	D		
39-54	E		
21-38	F		
1-20	G		



Agents notes: All measurements are approximate and for general guidance only and whilst every attempt has been made to ensure accuracy, they must not be relied on. The fixtures, fittings and appliances referred to have not been tested and therefore no guarantee can be given that they are in working order. Internal photographs are reproduced for general information and it must not be inferred that any item shown is included with the property. For a free valuation, contact the numbers listed on the brochure. Copyright © 2026 Fine & Country Ltd. Registered in England and Wales. Company Reg. No. 2597969. Registered office address: St Leonard's House, North Street, Horsham, West Sussex. RH12 1RJ. Printed 12.06.2026



Fine & Country  
Tel: 01227 479 317  
canterbury@fineandcountry.com  
23 Watling Street, Canterbury, Kent CT1 2UA

