



**Modern
Auction**

**£160,000
Leasehold**

1x  1x  1x 

**Milton Court, Spring
Grove, Gravesend, Kent,
DA12**

Wards
Helping you move forwards



Main features

- Another great buy to let option
- Walking distance to town centre and mainline train station
- Allocated parking
- For sale by Modern Auction - T&Cs apply
- Subject to an undisclosed Reserve Price
- Buyer's fees apply

Accommodation

GROUND FLOOR

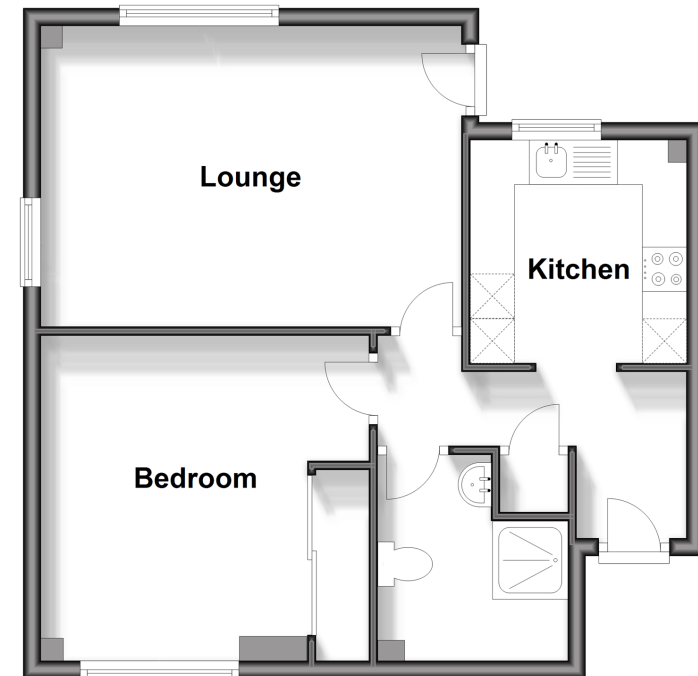
- Entrance Hall
- Kitchen : 8'2 x 8'0 (2.49m x 2.44m)
- Lounge : 15'7 x 11'2 (4.75m x 3.41m)
- Bedroom : 12'2 x 12'0 (3.71m x 3.66m)
- Shower Room : 7'6 x 7'0 (2.29m x 2.14m)

OUTSIDE

- Terrace
- 1 Allocated Parking Space

Ground Floor

Approx. 47.2 sq. metres (508.1 sq. feet)



Call Gravesend - 01474 352417 ■ wardsof Kent.co.uk

■ Legal advice should be taken to verify fixtures/fittings, planning, alterations and/or lease details

■ Appliances & services are untested, dimensions are approximate and floor plans are not to scale



11140326/20250221/MM/KG

Internal error in letter template 368 - Data type mismatch.

Template timestamp is 25/02/25 09:22:37

Record identifiers:

Property = 11140326

Please copy this detail out of the letter and paste it into a Help Desk call, then take a Diagnostic Snapshot & attach it to the same call.