



Guide Price
£200,000

Leasehold

2x  1x  1x 

**Gange Mews, Middle
Row, Faversham, Kent,
ME13**

OVER 60?

Secure this property
for up to **59% less!**

Wards
Helping you move forwards



Main features

- First floor retirement apartment in private gated mews
- Town centre location with 3 weekly markets, cafes and restaurants
- Residents lounge and communal laundry room
- Delightful communal gardens
- No chain

Accommodation

FIRST FLOOR

Entrance Hall

Lounge/Diner: 17'0 x 10'0 (5.19m x 3.05m)

Kitchen: 10'5 x 6'0 (3.18m x 1.83m)

Bedroom 1: 14'4 x 8'7 (4.37m x 2.62m)

Bedroom 2: 13'10 maximum x 6'0 (4.22m x 1.83m)

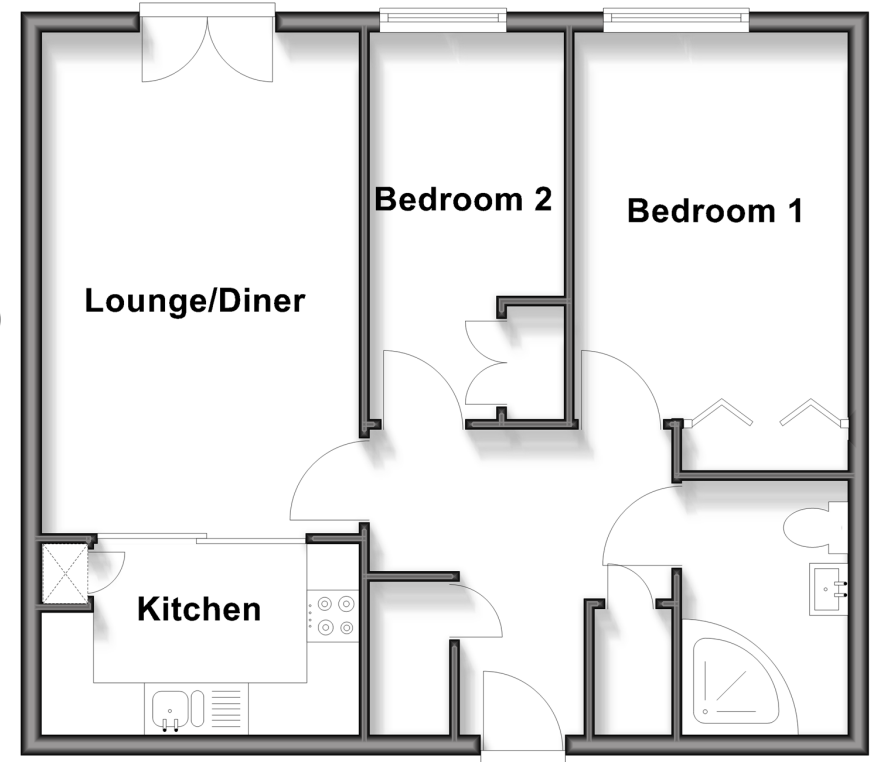
Shower Room

OUTSIDE

Communal Gardens

First Floor

Approx. 52.4 sq. metres (563.5 sq. feet)



Call Faversham - 01795 535517 ■ wardsof Kent.co.uk

■ Through a Homewise Home For Life Plan people aged 60+ can secure this property for up to 59% less, by purchasing a Lifetime Lease



10800P6V/20260407/PJ/PJ