



**Guide Price**  
**£350,000**

**Freehold**

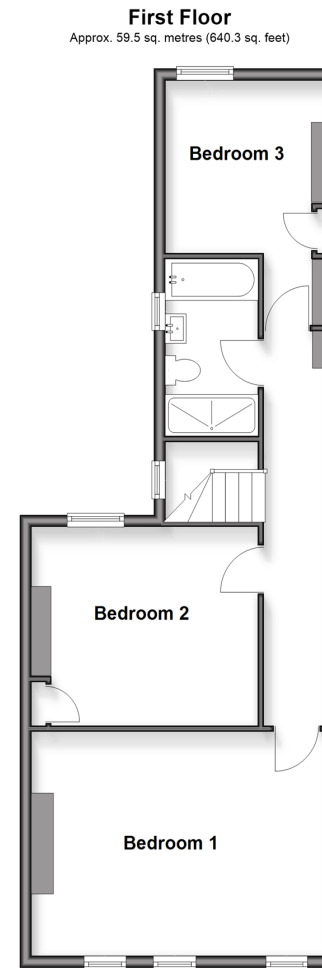
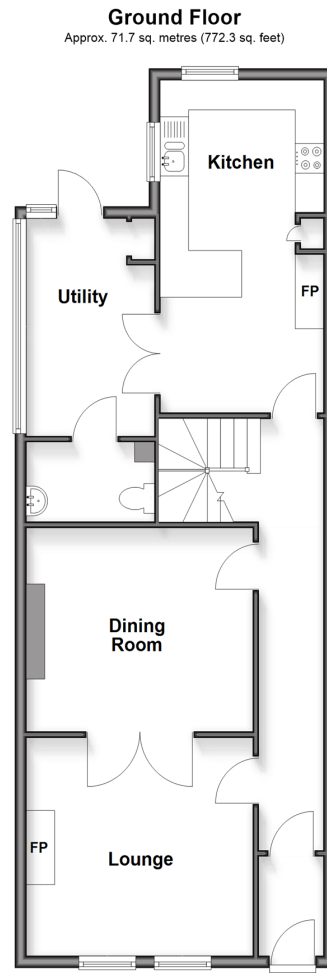
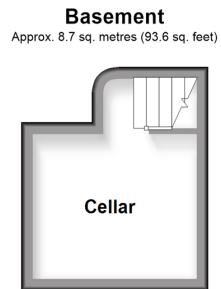
3x  1x  2x 

**The Terrace,  
Shepherdswell, Kent,  
CT15**

**OVER 60?**

Secure this property  
for up to **59% less!**

*Wards*  
Helping you move forwards



## Accommodation

### GROUND FLOOR

Entrance Lobby  
 Entrance Hallway  
 Lounge : 13'8 x 12'8 (4.17m x 3.86m)  
 Dining Room: 13'4 x 11'2 (4.07m x 3.41m)  
 Kitchen : 18'3 x 9'3 (5.57m x 2.82m)  
 Utility Area With Cloakroom : 12'2 x 6'8 (3.71m x 2.03m)

### BASEMENT

Cellar

### FIRST FLOOR

Landing  
 Bedroom 3 : 9'8 x 9'5 (2.95m x 2.87m)  
 Bathroom : 9'8 x 5'6 (2.95m x 1.68m)  
 Bedroom 2 : 12'6 x 11'2 (3.81m x 3.41m)  
 Bedroom 1 : 17'11 x 12'2 (5.46m x 3.71m)

### OUTSIDE

Front Garden  
 Rear Garden  
 Off Street Parking  
 Workshop/Outbuilding



## Main features

- Period terrace house in quiet no through road with off street parking
- Picturesque village of Shepherdswell
- High ceilings, large rooms, lots of original features
- Shepherdswell has excellent transport links with a railway station
- Easy to manage rear garden



### Nearest Schools

Primary Schools: Sibertswold C of E Primary at Shepherdswell 0.4 miles, Eythorne Elvington Community Primary 2.1 miles, Lydden Primary 3.3 miles  
Secondary Schools: Dover Grammar School for Girls 4.9 miles, Duke of York's Royal Military School 5.1 miles.



### Transport Information

Train Stations: Shepherdswell 0.0 miles, Kearsney 3.2 miles, Dover Priory 5.3 miles



### Address

The Terrace, Shepherdswell, Kent, CT15



### Directions

For directions to this property please contact us.



*Wards*  
Helping you move forwards

Call Dover Branch 01304 214876 ■ [wardsofkent.co.uk](http://wardsofkent.co.uk)



■ Through a Homewise Home For Life Plan people aged 60+ can secure this property for up to 59% less, by purchasing a Lifetime Lease



10700S41/20260410/TE/OV